



ELECTRONZ+
TRADING

INDUSTRIAL ELECTRICAL MATERIALS & AUTOMATION



sales@electronqatar.com ✉

www.electronqatar.com 🌐

Whatsapp Hotline: 3994-2201 📞



ELECTRONZ+
TRADING

TABLE OF CONTENTS

| | |
|---|----------------|
| POWER SWITCHES | page 4 |
| CIRCUIT BREAKER | page 5 |
| MCCB | page 6 |
| CONTACTORS | page 7 |
| FUSES | page 8 |
| POWER FACTOR CORRECTION | page 9 |
| CHARGER, POWER SUPPLY & TRANSFORMERS | page 10 |
| CURRENT TRANSFORMERS FLEXIBLE ROGOWSKI COIL | page 11 |
| PANEL METERS | page 12 |
| CONTROL RELAYS | page 13 |
| CONTROL RELAYS | page 14 |
| PUMP & COMPRESSOR CONTROL | page 15 |
| PUMP & COMPRESSOR CONTROL | page 16 |
| RELAYS & SOCKETS | page 17 |
| BUTTON & SWITCHES | page 18 |
| CAM SWITCHES | page 19 |
| TERMINAL BLOCK | page 20 |
| TERMINALS | page 21 |
| FAN & HEATERS | page 22 |
| PANEL LOCKS & HINGES | page 23 |
| PANEL ACCESSORIES | page 24 |
| INSULATORS / TRUNKING / RAILS / GLANDS | page 25 |
| LUGS | page 26 |
| CONSUMABLES | page 27 |
| TOOLS | page 28 |
| AUTOMATION | page 29 |
| FLOW & COOLING & HEATING | page 30 |
| TERMINALS | page 31 |
| CONNECTORS AND SOCKETS | page 32 |
| BEACONS, BUZZERS & OBSTRUCTION LIGHTS | page 33 |
| ENCLOSURES & BOXES | page 34 |
| INDOOR LIGHTING, OUTDOOR LIGHTING & POWER SUPPLY | page 36 |
| HOME AUTOMATION | page 37 |
| FIRE ALARM SYSTEMS | page 38 |
| GENERATOR PARTS | page 39 |
| FANS & VENTILATORS | page 40 |
| UPS, REGULATORS & BATTERY CHARGER | page 41 |
| EXPLOSION-PROOF PRODUCTS | page 42 |



ELECTRONZ+



sales@electronqatar.com ✉

www.electronqatar.com 🌐

Whatsapp Hotline: 3994-2201 📞

AUTOMATIC TRANSFER CHANGEOVER SWITCH WITH MOTOR

MATS-63
MATS-100
MATS-160
MATS-200
MATS-250
MATS-400
MATS-630
MATS-1000
MATS-1600
MATS-2500

63A
100A
160A
200A
250A
400A
630A
1000A
1600A
2500A



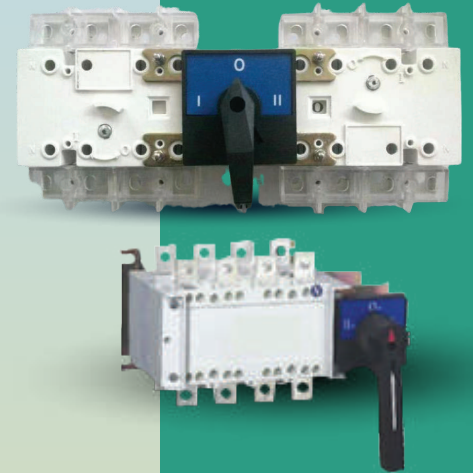
ATS
CONTROLLER
**ATS
2.0**



MANUAL TRANSFER SWITCH (MTS)

MMTS-63
MMTS-100
MMTS-250
MMTS-400
MMTS-630
MMTS-1000
MMTS-1250
MMTS-1600
MMTS-2500

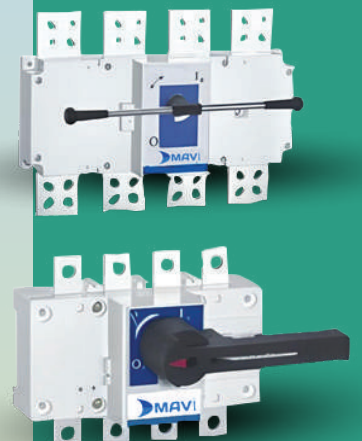
63A
100A
250A
400A
640A
1000A
1250A
1600A
2300A



ISOLATOR SWITCH WITH HANDLE

MIS-63
MIS-100
MIS-160
MIS-250
MIS-400
MIS-630
MIS-1600
MIS-2500

63A
100A
160A
250A
400A
640A
1600A
2300A



POWER SWITCHES



ELECTRONZ+



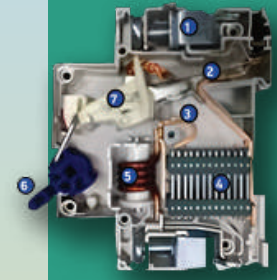
sales@electronqatar.com ✉

www.electronqatar.com 🌐

Whatsapp Hotline: 3994-2201 📞

MCB

1. High torque terminal for line / load power.
2. Bi-metallic strip
3. Silver alloy contact
4. Quick & efficient arc extinguisher
5. Coil selenoid
6. Actuator level
7. Quick make actuator mechanism

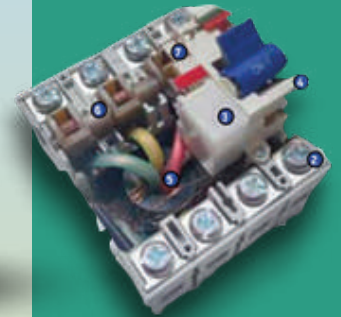


| Type | | | MBC-4.5 | | | | MBC-6 | | | | MBC-10 | | | | MBC-H | | | | MBC-6DC | | | | MBC-10DC | | | | | |
|------------------------------|----|-------|-------------------------------------|---|-----|---|---|---|-----|---|-------------------------------------|---|-----|---|-------------|---|-----|---|---------------------------|-----|------|----|---------------------------|-----|---|---|--|--|
| No of poles | | | 1 | 2 | 3 | 4 | 1 | 2 | 3 | 4 | 1 | 2 | 3 | 4 | 1 | 2 | 3 | 4 | 1 | 2 | 3 | 4 | 1 | 2 | 3 | 4 | | |
| Rated nominal current | In | A | 32,4,6,10,16,20,25,2,40,50,63 | | | | 1,2,3,4,5,6,10,16,2,4,6,10,16,20,25,32,40,50,63 | | | | 2,4,6,10,16,20,25,32,40,50,63 | | | | 80,100,125 | | | | 6,10,16,20,25,32,40,50,63 | | | | 6,10,16,20,25,32,40,50,63 | | | | | |
| Instantaneous tripping class | | | B:(3-5)xIn C:(5-10)xIn D:(10-20)xIn | | | | B:(3-5)xIn C:(5-10)xIn D:(10-20)xIn | | | | B:(3-5)xIn C:(5-10)xIn D:(10-20)xIn | | | | C:(5-10)xIn | | | | C:(7-14)xIn | | | | C:(7-14)xIn | | | | | |
| Rated operating voltage | Ue | AC(V) | 230/400 | | 400 | | 230/400 | | 400 | | 230/400 | | 400 | | 230/400 | | 400 | | 25 | 500 | 1000 | 48 | 110 | 250 | | | | |
| Power supply | | | AC | | | | AC | | | | AC | | | | AC | | | | DC | | | | DC | | | | | |
| Rated insulation voltage | Ui | V | 690 | | | | 690 | | | | 690 | | | | 690 | | | | 440 | | | | 440 | | | | | |

CIRCUIT BREAKER

RCCB

1. Actuator Lever
2. Clamp terminals
3. Trip relay inside cover
4. Mechanism
5. Summation current transformer
6. Rotary system of movable contact
7. Reset button with resistance multiplier



| Type | | | RCA-2/AC | RCA-4/AC | RCA-2/A | RCA-4/A | RCB-2/AC | RCB-4/AC | RCB-2/AC+s | RCB-4/AC+s | RCK-2 | RCK-4 | | | | | | |
|--------------------------|----|----|--------------------|----------|---------|---------|--------------------|----------|------------|------------|--------------------|-------|--|--|----------|--|--|--|
| No of poles | | | 2 | 4 | 2 | 4 | 2 | 4 | 2 | 4 | 2 | 4 | | | | | | |
| Rated current | In | A | 25,32,40,63,80,100 | | | | 25,32,40,63,80,100 | | | | 25,32,40,63,80,100 | | | | 25,40,63 | | | |
| Rated residual current | IΔ | mA | 30,100,300 | | | | 30,100,300 | | | | 30,100,300 | | | | 30,3 | | | |
| Rated frequency | | Hz | 50-60 | | | | 50-60 | | | | 50-60 | | | | 50-60 | | | |
| Type of residual current | | | AC | | | | A | | | | AC | | | | B | | | |

COMPASS BUSSBAR

Poles
1 Or 3

Current
80A Or 100A





ELECTRONZ+



sales@electronqatar.com ✉

www.electronqatar.com 🌐

Whatsapp Hotline: 3994-2201 📞

MCCB

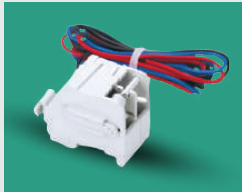
| | |
|----------------------|---|
| TYPE | ADJUSTABLE |
| RATED CURRENT | 16,20,25,32, 40,50,63,80, 100,125,160, 180,200,225, 250,400,630 |
| POLE | 2-POLE 3-POLE 4-POLE |

BUILT-IN ACCESSORY



Shunt Trip

The shunt trip is an accessory for remote control. The shunt will trip when the input voltage is 70% -110% of the rated operated voltage



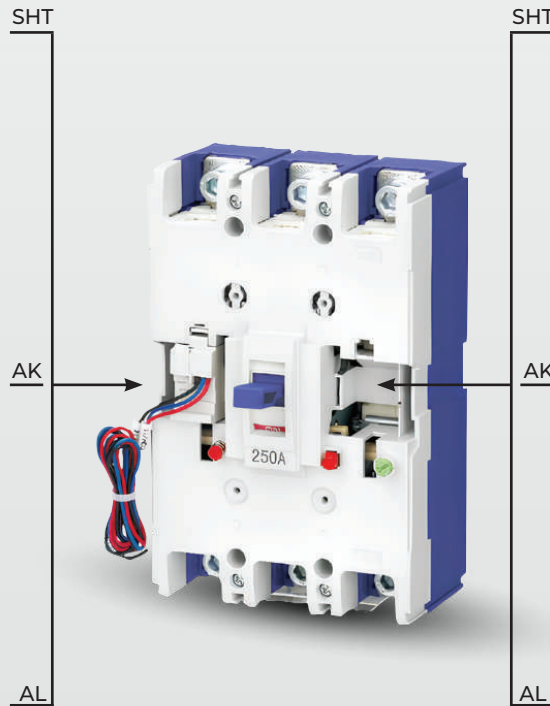
Auxiliary Contact

Auxiliary contact is used to indicate "On" or "Off" status of the breaker.

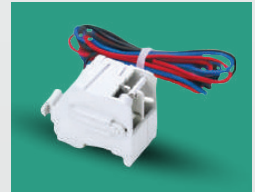


Alarm Contact

Alarm contact will indicate people due to overload, short circuit or shunt trip.



Shunt Trip



Auxiliary Contact



Alarm Contact



Earth Leakage Relay & Core Balance Current Transformer ELR & CBCT

| Code | CBCT | |
|------------|------------------|---------|
| | I _{Max} | ∅ |
| VTOR-45-1 | 100A | 45 |
| VTOR-80-1 | 400A | 80 |
| VTOR-100-1 | 630A | 100 |
| VTOR-150-1 | 1250A | 150 |
| VTOR-210-1 | 2500A | 210 |
| VTOR-310 | 3500A | 310 |
| VAYR-36 | 5000A | 360x100 |
| VAYR-50 | 5500A | 500x100 |





ELECTRONZ+



sales@electronqatar.com ✉

www.electronqatar.com 🌐

Whatsapp Hotline: 3994-2201 📞

CONTACTORS

| Type | Main circuit characteristic | | | | | | | | | | | | |
|---|-----------------------------|-----------------|--|---------|---------|---------|---------|----------|----------|----------|--------|--------|--|
| | DKAC-09 | DKAC-12 | DKAC-18 | DKAC-25 | DKAC-32 | DKAC-40 | DKAC-50 | DKAC-65 | DKAC-80 | DKAC-95 | | | |
| Poles | 3P | | | | | | | | | | | | |
| Rated insulation voltage (Ui) | V 69 | | | | | | | | | | | | |
| Rated operating voltage(Ue) | V 380/40 | | | | | | | | | | | | |
| Rated thermal current(Ith),AC-1 | | 20 | 20 | 32 | 40 | 50 | 50 | 80 | 80 | 125 | 125 | | |
| Rated operation current(Ie) | AC-3,380/400V | A | 9 | 12 | 18 | 25 | 32 | 38 | 50 | 65 | 80 | 95 | |
| | AC-3,660/690V | A | 6.6 | 8.9 | 12 | 18 | 22 | 22 | 39 | 42 | 49 | 49 | |
| | AC-4,380/400V | A | 3.5 | 5 | 7.7 | 8.5 | 12 | 14 | 24 | 28 | 37 | 44 | |
| | AC-4,660/690V | A | 1.5 | 2 | 3.8 | 4.4 | 7.5 | 8.9 | 12 | 14 | 17.3 | 21.3 | |
| Rated operation power(Ie) | AC-3,380/400V | kW | 4 | 5.5 | 7.5 | 11 | 15 | 18.5 | 22 | 30 | 37 | 45 | |
| | AC-3,660/690V | kW | 5.5 | 7.5 | 10 | 15 | 18.5 | 18.5 | 33 | 37 | 45 | 45 | |
| | AC-4,380/400V | kW | 1.5 | 2.2 | 3.3 | 4 | 5.4 | 5.5 | 11 | 15 | 18.5 | 22 | |
| | AC-4,660/690V | kW | 1.1 | 1.5 | 3 | 3.7 | 5.5 | 6 | 10 | 11 | 15 | 18.5 | |
| Mechanical life | | 1200 | | | 1000 | | | 900 | | 650 | | | |
| Electrical life | AC-3 | 10000 times | 110 | | | 90 | | | 65 | | | | |
| | AC-4 | | 22 | | | 17 | | | 11 | | | | |
| Frequency of operation | AC-3 | times/hour | 1200 | | | 600 | | | | | | | |
| | AC-4 | | 300 | | | 300 | | | | | | | |
| Connecting capability of main circuit terminal | | | | | | | | | | | | | |
| Flexible wire | 1 Wire | mm ² | 1...4 | | | 1.5...6 | | | 2.5...25 | | 4...50 | | |
| No terminals | 2 Wire | mm ² | 1...4 | | | 1.5...6 | | | 2.5...16 | | 4...25 | | |
| Flexible wire | 1 Wire | mm ² | 1...4 | | | 1...6 | | | 2.5...25 | | 4...50 | | |
| With terminals | 2 Wire | mm ² | 1...2.5 | | | 1...4 | | | 2.5...10 | | 4...16 | | |
| Hard wire | 1 Wire | mm ² | 1...4 | | | 1.5...6 | | 1.5...10 | | 2.5...25 | | 4...50 | |
| No terminals | 2 Wire | mm ² | 1...4 | | | 1.5... | | | 2.5...10 | | 4...25 | | |
| Fastening torque | | N.m | 1...2 | | | 1...8 | | | 5 | | 9 | | |
| Coil | | | | | | | | | | | | | |
| Rated control voltage(Us) | 50 Hz | V | 24,36,48,110,127,220/230,240,380/400,415,440 | | | | | | | | | | |
| | 50/60Hz | V | 24,36,48,110,127,220/230,240,380/400,415,440 | | | | | | | | | | |
| Allowed control circuit voltage (Us) | Operation | V | Installation inclination angle ±22.5:85%~110% Us; Installation inclination angle ±5:70:96~120% | | | | | | | | | | |
| | Release | V | Installation inclination angle ±22.5:20%~75% Us; Installation inclination angle ±5:20%~65% | | | | | | | | | | |
| Power consumption of coil | Actuation | VA | 60 | | | 70 | | | 200 | | 200 | | |
| | Keep | VA | 6-9.5 | | | 6-9.5 | | | 15-20 | | 15-20 | | |
| | Consumption | W | 1-3 | | | 1-3 | | | 6-10 | | 6-10 | | |
| Auxiliary contacts | | | | | | | | | | | | | |
| Auxiliary contacts specification | | A | 11 | | | | | | | | | | |
| Rated thermal current(Ith) | | A | 10 | | | | | | | | | | |
| Rated operating voltage(Ue) | AC | V | 380 | | | | | | | | | | |
| | DC | V | 220 | | | | | | | | | | |
| Rated control capacit | AC-15 | VA | 360 | | | | | | | | | | |
| | DC-13 | W | 33 | | | | | | | | | | |

MODULAR CONTACTORS

Poles
2, 3 or 4

Current
20, 25, 40 OR 63A



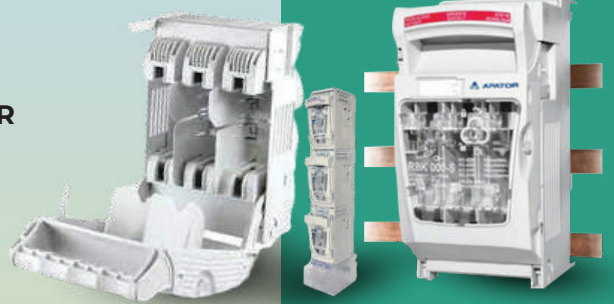
FUSE HOLDER

RBK-00-S

**BUSBAR MOUNTED FUSE HOLDER
SUITABLE FOR NH-00&NH-000
FUSES (160A)**

RBK-00-S

**MOUNTING ON PLATE FUSE
DISCONNECTOR SUITABLE FOR
NH-00&NH-000 FUSES (160A)**



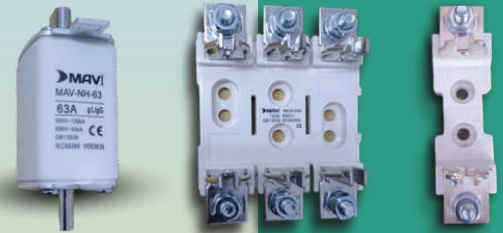
NH FUSE

1 Pole NH00 Fuse Base

3 Pole NH00 Fuse Base

3 Pole NH1 Fuse Base

NH Fuse Links 16A to 1000A



CYLINDRICAL FUSE HOLDER

| Parameter | 10x38mm | 14X51mm | 22X58mm |
|-----------------------|---------|---------|---------|
| Rated Voltage | 690V | 690V | 690V |
| Breaking Capacity | 50KA | 50KA | 100KA |
| Max Power Dissipation | 3W | 5W | 9,5W |
| Altitude | 2000m | 2000m | 2000m |
| Flame Resistant | 6kV | 8kV | 8kV |



CYLINDRICAL CERMAIC FUSE

| Type | | | |
|-------|---------|--------|----------|
| 10x38 | 0,5-32A | 10,3±1 | 38+0,6 |
| 14x51 | 6-50A | 14,3±1 | 51+0.6-1 |
| 22z58 | 16-25A | 22,2±1 | 58+0.1-2 |



GLASS FUSE 5x20

| | |
|---------|-----------------------|
| GFL-0.5 | GLASS FUSE 5X20, 0,5A |
| GFL-01 | GLASS FUSE 5X20, 1A |
| GFL-02 | GLASS FUSE 5X20, 2A |
| GFL-03 | GLASS FUSE 5X20, 3A |
| GFL-04 | GLASS FUSE 5X20, 4A |
| GFL-05 | GLASS FUSE 5X20, 5A |
| GFL-06 | GLASS FUSE 5X20, 6A |
| GFL-07 | GLASS FUSE 5X20, 7A |
| GFL-08 | GLASS FUSE 5X20, 8A |
| GFL-10 | GLASS FUSE 5X20, 10A |
| GFL-15 | GLASS FUSE 5X20, 15A |
| GFL-20 | GLASS FUSE 5X20, 20A |





ELECTRONZ+

sales@electronqatar.com ✉

www.electronqatar.com 🌐

Whatsapp Hotline: 3994-2201 📞

POWER FACTOR CORRECTION

RGM-12S

Single Phase Reactive Power Control Relay, 12 Stage, LCD



POWER FACTOR CORRECTION



440V/480V Capacitor 3-PHASE

KVAR

5, 7.5, 10, 12.5, 25, 50



Compensation Contactor

KVAR

5, 7.5, 10, 12.5, 25, 30, 50



3-Phase Harmonic Reactor, 189Hz, 7%

KVAR

25, 30, 50, 100





ELECTRONZ+



sales@electronqatar.com ✉

www.electronqatar.com 🌐

Whatsapp Hotline: 3994-2201 📞

CHARGER, POWER SUPPLY & TRANSFORMERS

POWER SUPPLY

| | |
|------------|---|
| HDR-15-24 | POWER SUPPLY INPUT RANGE 85- 264VAC; OUTPUT 24VDC AT 0.63A |
| EDR-75-24 | AC-DC INDUSTRIAL DIN RAIL POWER SUPPLY 24V 3.2A |
| NDR-120-24 | POWER SUPPLY 24VDC 5A |
| NDR-240-24 | POWER SUPPLY 24VDC 10A |
| NDR-480-24 | POWER SUPPLY 24VDC 20A |
| DRDN20-24 | REDUNDANCY MODULE 0-20A |
| TPS-2403 | POWER SUPPLY DIN TYPE 24V, 3A |



BATTERY CHARGER

| | |
|----------|---|
| TBC-1205 | BATTERY CHARGER 12V 5A 70W, DIN RAIL |
| TBC-1210 | BATTERY CHARGER 12V 10A 140W, DIN RAIL |
| TBC-2405 | BATTERY CHARGER 24V 5A 140W, DIN RAIL |
| TBC-2410 | BATTERY CHARGER 24V 10A 275W, DIN RAIL |
| TBC-3002 | BATTERY CHARGER 30V 2.2A 70W, DIN RAIL |

- Maintenance Free Sealed Lead Acid 6V 4.5A
- Maintenance Free Sealed Lead Acid / VRLA Battery 12V 7AH
- Maintenance Free Sealed Lead Acid / VRLA Battery 12V 3AH
- Maintenance Free Sealed Lead Acid / VRLA Battery 12V 12AH



Star Trans

POWER SUPPLY

| | |
|--------------|--|
| 10VA-24024 | 10VA 240/24VAC |
| 25VA-24024 | 25VA 240/24VAC |
| 50VA-24024 | 50VA 240/24VAC |
| 100VA-24024 | 100VA 240/24VAC |
| 160VA-24024 | 160VA 240/24VAC |
| 200VA-24024 | 200VA 240/24VAC |
| 300VA-24024 | 300VA 240/24VAC |
| 400VA-24024 | 400VA 240/24VAC |
| 500VA-24024 | 500VA 240/24VAC |
| 1000VA-24024 | 1000VA 240/24VAC |
| 100VA-MULT | ELEVATOR TRANSFORMER 100VA, PRIMARY: 380-220V/ SECONDARY: 110-95-85-75-60-48-24-1612V |

CAN BE PRODUCED WITH OTHER SPECIFICATIONS

THREE PHASE TRANSFORMER

0.1KVA TO 200KVA

POOL CONTROL TRANSFORMER

240/12V





ELECTRONZ+



sales@electronqatar.com ✉

www.electronqatar.com 🌐

Whatsapp Hotline: 3994-2201 📞

CURRENT TRANSFORMERS

CURRENT TRANSFORMER

| | |
|----------|------------------------------------|
| ATM-30C | 30/5A (circular hole dia 20) |
| ATM-40C | 40/5A (circular hole dia 20) |
| ATM-50C | 50/5A (circular hole dia 20) |
| ATM-60C | 60/5A (circular hole dia 20) |
| ATM-40 | 40/5A, 30mm (circular hole dia 20) |
| ATM-60 | 60/5A, 30mm (circular hole dia 20) |
| AT-40 | 40/5A, 30mm |
| AT-50 | 50/5A, 30mm |
| AT-60 | 60/5A, 30mm |
| ATM-100 | 100/5A, 30mm |
| ATM-150 | 150/5A, 30mm |
| ATM-200 | 200/5A, 30mm |
| ATM-250 | 250/5A, 30mm |
| ATM-300 | 300/5A, 30mm |
| ATM-400 | 400/5A, 30mm |
| AT-400 | 400/5A, 40mm |
| AT-600 | 600/5A, 40mm |
| AT-630 | 630/5A, 40mm |
| AT-800 | 800/5A, 60mm |
| AT-1000 | 1000/5A, 60mm |
| AT-1200 | 1200/5A, 60mm |
| AT-1600 | 1600/5A, 100mm |
| AT-2000 | 2000/5A, 100mm |
| AT-2500 | 2500/5A, 100mm |
| AT-600V | 2500/5A, 125mm, vertical |
| AT-1600V | 1600/5A, 125mm, vertical |
| AT-2000V | 2000/5A, 125mm, vertical |
| AT-2500V | 2500/5A, 125mm, vertical |
| AT-3200 | 3200/5A, 120x70mm |
| AT-4000 | 4000/5A, 120x70mm |
| BK1C | Closed Type (Screw Terminal) |



SPLIT CORE CURRENT TRANSFORMER

| Code | HOLE DIMENSION (mm) | CT Ratio |
|-------|---------------------|---------------------|
| MSK24 | Ø24 | 100/5A to 300/5A |
| MSK36 | Ø36 | 100/5A to 300/5A |
| MSK50 | Ø50 | 100/5A to 600/5A |
| SK58 | 50x80 | 250/5A to 6300/5A |
| SK88 | 80x80 | 400/5A to 2000A/5A |
| SK812 | 80x120 | 400/5A to 3000A/5A |
| SK816 | 80x160 | 1000/5A to 5000A/5A |
| SK820 | 80x200 | 2000/5A to 6300A/5A |



FLEXIBLE ROGOWSKI COIL

ROGOWSKI POWER METER

CONVERTER FOR METERS





ELECTRONZ+



sales@electronqatar.com ✉

www.electronqatar.com 🌐

Whatsapp Hotline: 3994-2201 📞



KWH 3 PH



EM-06DIN



EM-06



TPM-01ES



EM-07



KWH 1PH



DA-DIN



DJ-A36



DJ-V725



DJ-A96T

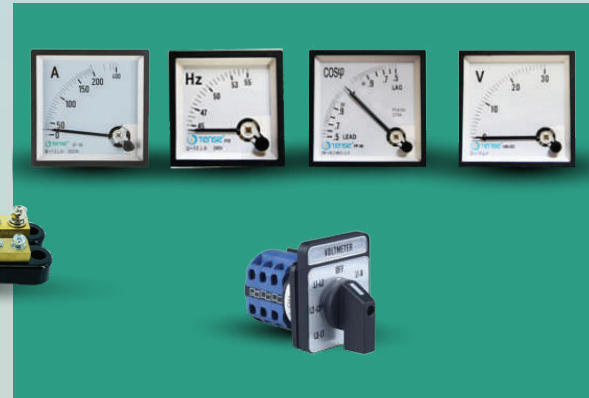
PANEL METERS

| 1-PHASE | 36x78 | 48X48 | 72X72 | 96X96 | DIN RAIL |
|---------|--------|--------|--------|--------|----------|
| A | DJ-A36 | DJ-A48 | DJ-A72 | DJ-A96 | DA-DIN |
| V | DJ-V36 | DJ-V48 | DJ-V72 | DJ-V96 | DA-DIN |
| F | DJ-F36 | DJ-F48 | DJ-F72 | DJ-F96 | DA-DIN |

| DC | 36x72 | 48X48 | 72X72 |
|----|----------|----------|----------|
| V | DJ-V36DC | DJ-V48DC | DJ-V72DC |
| A | DJ-A36DC | DJ-A48DC | DJ-A72DC |

ANALOG METERS

- V72 OR V96 (0-500V) VOLTMETER 72X72 OR 96X96
- A72 OR A96-XXXX AMMETER 72X72 OR 96-XXXX/SA CT)
- MD172 OR MD196-XXXX AMMETER 72X72OR 96X96 MDI --(XXXXX / SA CT)
- F72 OR F96 FREQUENCY METER 72X72 OR 96X96
- V72 OR VD96 0-30V DC VOLTMETER 72X72 OR 96X96
- PF72 OR PF96 POWER FACTOR METER 72X72 OR 96X96



METER SELECTOR



- VS-07 VOLTMETER SELECTOR SWITCH 7POS
- AS-04 AMPERMETER SELECTOR SWITCH 4POS

HUMIDITY AND TEMPERATURE CONTROLLER



AD-95



DT-96



HT-310



DT-321



MAV-J/K

| TEMPERATURE CONTROLLER | SIZE |
|------------------------|-------------------------|
| HT-310 | 36x78 |
| DT-36/48/72/96Y | 36x78/48x48/72x72/96x96 |
| DT-36/48/72/96EM | 36x78/48x48/72x72/96x96 |
| DT-312 | 36X78 |
| DT-321 | 36X78 |
| DT-322 | 36X78 |
| AD-96 | 96X96 |
| MAV-J/2-4M | |
| MAV-K/2-5M | |



ELECTRONZ+



sales@electronqatar.com ✉

www.electronqatar.com 🌐

Whatsapp Hotline: 3994-2201 📞

CONTROL RELAYS

TIMERS



ERV-YU



MAV-AHC811



ERV-09



ERS-30Y

| | |
|------------|---|
| ERV-60 | On Delay 0.1 sec - 60 sec 24VDC or 220VAC |
| ERV-08 | On Delay 0.1 sec - 100 Hours 24VDC or 220VAC |
| ERX-10 | Functional Timer, 10 Programmable |
| ERV-YU | Command Control Relay, Star-Delta Connection |
| ERV-09 | Flasher Relay, Multifunction |
| ERS-07 | Command Control Relay, Right-Left Output, Multifunctional |
| MAV-AHC811 | 16A LCD Digital WEEKLY Timer METER |
| DTR-10 | Astronomical Relay 24hr 2C/O |
| ERS-30Y | Socket Type Time Relay, 0.1sec - 30sec |
| ERS-60Y | Socket Type Time Relay, 0.1sec - 60sec |

PANEL TYPE TIMERS



ERD-72



DFR-72



ERD-72M

| | |
|---------|---|
| DFR-72 | Analogue Adj. Digital Flasher Relay, Working-waiting time adj |
| ERD-72M | Digital Timer 8 Different Operating Modes, 24VDC Inputs |
| ERD-72 | On delay or flasher digital timer |

PROTECTION RELAY



GKT-03F



DGK-04



GKM-11



DGK-01



FKV-24F



FKV-14



FKT-06F



FKV-14P

| VOLTAGE CONTROL RELAY | | |
|-----------------------|----------------------|-----------------|
| SINGLE PHASE | Analogue | GKM-11 |
| | Digital with Display | DGK-01 |
| THREE PHASE | Analogue | Without neutral |
| | | With neutral |
| | Digital | Without neutral |
| | | GKT-03F |
| | | GKT-02F |
| | | DGK-04 |

| PHASE FAILURE RELAY | | |
|--------------------------|--|---------|
| Fixed Assymmetry | without neutral | FKV-03N |
| | with neutral | FKV-14 |
| Adjustable Assymmetry | with PTC Relay Connection | FKV-14P |
| | 4 functions (U/O Volt., Asym., Phase Absance, Phase sequece) | FKV-24F |
| | without neutral | FKT-06F |
| | with neutral | FKM-05F |



ELECTRONZ+



sales@electronqatar.com ✉

www.electronqatar.com 🌐

Whatsapp Hotline: 3994-2201 📞

CONTROL RELAYS

24 HOURS DAILY TIMERS



MTR-2402



MTR-2404



MTR-2401



TTR-10

| | |
|----------|--|
| MTR-2401 | 24-HOUR MECHANICAL TIMER (16A) |
| MTR-2402 | 24-HOUR MECHANICAL TIMER (16A) |
| MTR-2403 | 24-Hour daily Analog Timer (20A) |
| MTR-2404 | 24-Hour daily Analog Timer (30A) |
| TTR-10 | 24-Hour daily Timer repay (NEW PRODUCT DIGITAL) |

PANEL TYPE TIMERS



DHM-48



DS-72A



DHM-DIN



SF-48

| | |
|---------|---|
| DFR-48 | Digital Hour Meter, Panel Type 48x48 |
| DHM-DIN | Digital Hour Meter DIN Rail type |
| SF-48 | ANALOG RUN HOUR METER (OUTER DIM: 72x72) |
| DS-72A | Digital Counter with 2x6 Digit LED Display - High features |



TRM-XX



DAKR-01D

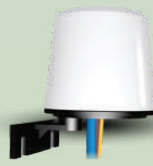
| OVERLOAD RELAY | | | | |
|----------------|---------|------------|-----------|---------|
| Three Phase | Digital | Adjustable | 3A-12A | TRM-12 |
| | | | 0,1A-25A | TRM-25 |
| | | | 15A-50A | TRM-50 |
| | | | 40A-100A | TRM-100 |
| | | | 90A-200A | TRM-200 |
| | | | 290A-400A | TRM-400 |

| UNDERCURRENT | | | |
|--------------|------------|-------------------------|----------|
| Single Phase | Adjustable | Inrush Time | DAKR-01D |
| | | Under Current Fault | |
| | | Waiting Time | |
| | | Under Current Set Value | |

PHOTOCELL RELAY



FTV-04



FT=GR

| | |
|--------|--|
| FT-GR | Photocell Relay, Fixed Lux |
| FTV-04 | PHOTOCELL RELAY 1 Lux - 10 Lux (Adjustable) |

SURGE PROTECTIVE DEVICE



| Code | Protection Class | In | IMAX |
|-------------|------------------|------|------|
| SPD-C-30-40 | C | 20kA | 40kA |
| SPD-B-30-60 | B | 30kA | 60kA |



ELECTRONZ+



sales@electronqatar.com ✉

www.electronqatar.com 🌐

Whatsapp Hotline: 3994-2201 📞

PUMP & COMPRESSOR CONTROL

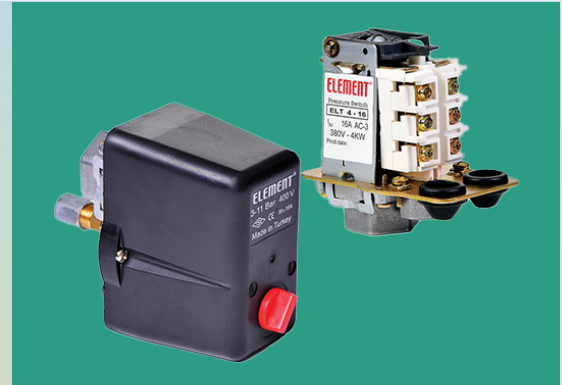
LIQUID & PUMP CONTROLLERS

| | |
|---------|---|
| HSR-03X | Hydrophore Sequencing Relay, 3 pcs |
| HSR-02X | Hydrophore Sequencing Relay, 2 pcs |
| VSR-05 | Liquid Level Relay, Sensitivity Adjustment, DIN |
| SSE-10 | Liquid Level Relay Electrode |
| FLT-X | X Meter Wired Floater |
| MDK-03 | 3-Phase, Submersible Pump Control Relay, DIN RAIL |
| MDK-02 | 1-Phase, Submersible Pump Control Relay |
| TDK-30 | 3-Phase Submersible Control Relay Three Phase, Digital Contactor (30A), DIN RAIL |
| TDK-02 | 3-Phase Panel Type Submersible Pump Control Relay |



THREE PHASE PRESSURE SWITCH

| Type | Setting Range (Bar) | Differential (Bar) | | Bottom Connection |
|-------|---------------------|------------------------|-----------|-------------------|
| ELT-2 | 2-8 | Without Unloader Valve | 0,9 / 4,7 | 1/2" 1/4" |
| | | With Unloader Valve | 1,2 / 5,0 | 1/2"+1/8" |
| ELT-3 | 3-11 | Without Unloader Valve | 1,2 / 5,3 | 1/4"+1/8" |
| | | With Unloader Valve | 1,5 / 5,6 | |
| ELT-4 | 4-16 | Without Unloader Valve | 1,8 / 7,5 | 1x1/2"+3x1/8" |
| | | With Unloader Valve | 2,1 / 7,8 | 1x1/4"+3x1/8" |



SINGLE PHASE PRESSURE SWITCH

| Type | Setting Range (Bar) | Differential (Bar) | | Bottom Connection |
|-------|---------------------|------------------------|-----------|-------------------|
| ELT-5 | 1-6 | Without Unloader Valve | 0,9 / 2,5 | 1/2" 1/4" |
| | | With Unloader Valve | 1,2 / 2,8 | 1/2"+1/8" |
| | | | | 1/4"+1/8" |
| ELT-6 | 2-11 | Without Unloader Valve | 1,0 / 3,5 | 1x1/2"+3x1/8" |
| | | With Unloader Valve | 1,3 / 3,8 | 1x1/4"+3x1/8" |





ELECTRONZ+



sales@electronqatar.com ✉

www.electronqatar.com 🌐

Whatsapp Hotline: 3994-2201 📞

PUMP & COMPRESSOR CONTROL

PRESSURE SWITCHES

| Type | Setting Range (Bar) | Max Pressure (Bar) | Electrical Connection Type | Bottom Connection |
|-------------|---------------------|--------------------|---|--|
| ELT-MPS-2 | 0,2-2,5 | 30 | Normally Open (NO) Normally Close (NC) | S $\frac{1}{4}$ S $\frac{1}{8}$ ($\frac{1}{4}$ inch SAE) - ($\frac{1}{8}$ inch SAE) *Max 16 Bar |
| ELT-MPS-4 | 0,5-4 | 30 | | |
| ELT-MPS-6 | 0,5-6 | 30 | | |
| ELT-MPS-10 | 1-10 | 30 | | |
| ELT-MPS-16 | 1-16 | 30 | | |
| ELT-MPS-25 | 5-25 | 100 | | |
| ELT-MPS-40 | 5-40 | 100 | | |
| ELT-MPS-60 | 5-60 | 100 | | |
| ELT-MPS-100 | 10-100 | 300 | | |
| ELT-MPS-160 | 10-160 | 300 | | |
| ELT-MPS-200 | 10-200 | 600 | | |
| ELT-MPS-400 | 10-400 | 600 | | |



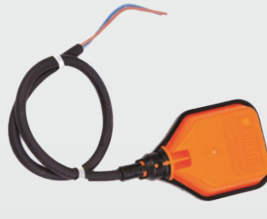
FLOATER



WASTE WATER 90



WASTE WATER 40



SUBMERSED PUMP



CLEAN WATER



LIQUID LEVEL CONTROLLER ELECTROD

PRESSURESTAT PRESSURE SWITCH

| Type | Setting Range (Bar) | Differential (Bar) | Max. Pressure (Bar) | Bottom Connection |
|--------|---------------------|--------------------|---------------------|---|
| ELT-35 | 0,8-8 | 0,6-3 | 13 | G $\frac{1}{4}$ S $\frac{1}{4}$ S $\frac{7}{16}$ (S $\frac{1}{4}$ inch GAS) - ($\frac{1}{4}$ inch SAE) - ($\frac{7}{16}$ inch SAE) |
| ELT-36 | 5-16 | 1-3,5 | 21 | |
| ELT-37 | 5-28 | 3-10 | 33 | G $\frac{1}{4}$ S $\frac{1}{4}$ (S $\frac{1}{4}$ inch GAS) - ($\frac{1}{4}$ inch SAE) |
| ELT-38 | 5-50 | 3-15 | 55 | |



PRESSURE TRANSMITTERS



SILICONE OR CERAMIC SENSOR OPTIC



FLOW SWITCH



CURRENT SWITCH



ELECTRONZ+



sales@electronqatar.com ✉

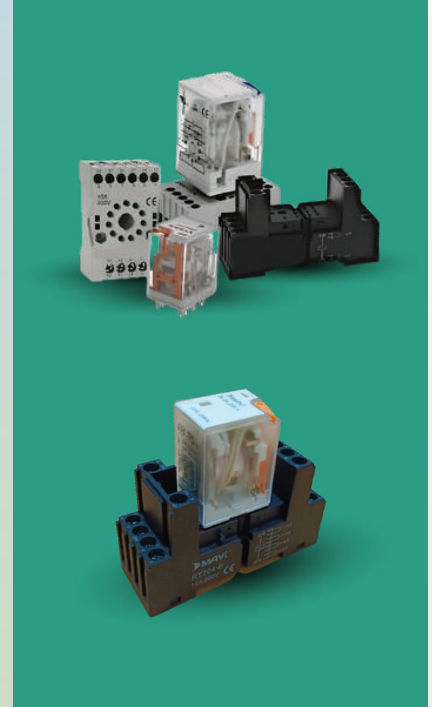
www.electronqatar.com 🌐

Whatsapp Hotline: 3994-2201 📞

RELAYS & SOCKETS

5A RELAYS WITH LED & TEST MECHANISM

| | |
|-------------|--|
| 36.02.230.A | 230VAC (8pins relay) 2 CONTACT |
| 36.02.110.A | 110VAC (8pins relay) 2 CONTACT |
| 36.02.48.A | 48VAC (8pins relay) 2 CONTACT |
| 36.02.24.A | 24VAC (8pins relay) 2 CONTACT |
| 36.02.12.A | 12VAC (8pins relay) 2 CONTACT |
| 36.02.48.D | 48VDC (8pins relay) 2 CONTACT |
| 36.02.24.D | 24VDC (8pins relay) 2 CONTACT |
| 36.02.12.D | 12VDC (8pins relay) 2 CONTACT |
| RT704-B | SOCKET (8PIN Black) 2 CONTACT |
| 36.04.230.A | 230VAC (14pins relay) 4 CONTACT |
| 36.04.110.A | 110VAC (14pins relay) 4 CONTACT |
| 36.04.48.A | 48VAC (14pins relay) 4 CONTACT |
| 36.04.24.A | 24VAC (14pins relay) 4 CONTACT |
| 36.04.12.A | 12VAC (14pins relay) 4 CONTACT |
| 36.04.48.D | 48VDC (14pins relay) 4 CONTACT |
| 36.04.24.D | 24VDC (14pins relay) 4 CONTACT |
| 36.04.12.D | 12VDC (14pins relay) 4 CONTACT |
| RT704-B | SOCKET (14PIN Black) 4 CONTACT |



5A RELAYS WITH LED & TEST MECHANISM

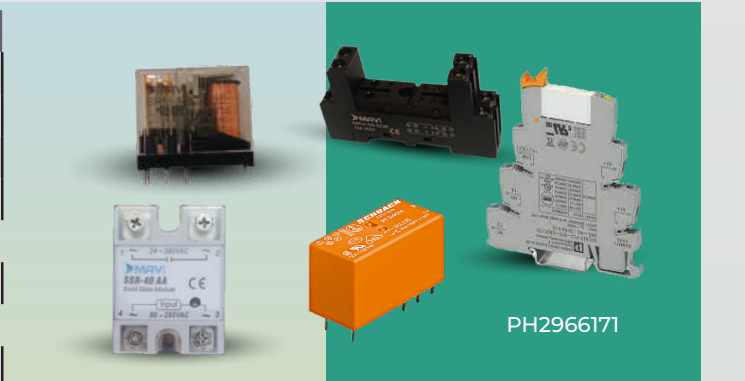
| | |
|------------|---|
| 90.2.230.A | 230VAC (8pins relay) 2 CONTACT ROUND TYPE |
| 90.2.110.A | 110VAC (8pins relay) 2 CONTACT ROUND TYPE |
| 90.2.48.A | 48VAC (8pins relay) 2 CONTACT ROUND TYPE |
| 90.02.24.A | 24VAC (8pins relay) 2 CONTACT ROUND TYPE |
| 90.02.12.A | 12VAC (8pins relay) 2 CONTACT ROUND TYPE |
| 90.02.48.D | 48VDC (8pins relay) 2 CONTACT ROUND TYPE |
| 90.02.24.D | 24VDC (8pins relay) 2 CONTACT ROUND TYPE |
| 90.02.12.D | 12VDC (8pins relay) 2 CONTACT ROUND TYPE |
| AS760 | SOCKET (ROUND TYPE) 8 PIN |
| 90.3.230.A | 230VAC (11pins relay) 2 CONTACT ROUND TYPE |
| 90.3.110.A | 110VAC (11pins relay) 2 CONTACT ROUND TYPE |
| 90.3.48.A | 48VAC (11pins relay) 2 CONTACT ROUND TYPE |
| 90.03.24.A | 24VAC (11pins relay) 2 CONTACT ROUND TYPE |
| 90.03.12.A | 12VAC (11pins relay) 2 CONTACT ROUND TYPE |
| 90.03.48.D | 48VDC (11pins relay) 2 CONTACT ROUND TYPE |
| 90.03.24.D | 24VDC (11pins relay) 2 CONTACT ROUND TYPE |
| 90.03.12.D | 12VDC (11pins relay) 2 CONTACT ROUND TYPE |
| AS770 | SOCKET (ROUND TYPE) 11 PIN |



| Slim Type | |
|--------------|------------------------|
| SRM-8-220-AC | 220VAC 8 PIN SUM RELAY |
| SRM-8-024-AC | 24VAC 8 PIN SLIM RELAY |
| SRM-8.024.DC | 24VC 8 PIN SLIM RELAY |
| MAV-08-SOK | 8 PIN SLIM SOCKET |

PH2966171 Phoenix Relay Module PLC-RSC- 24DC/21

SSR-40AA Solid State Module SSR 40AC TO AC380





ELECTRONZ+



sales@electronqatar.com ✉

www.electronqatar.com 🌐

Whatsapp Hotline: 3994-2201 📞

BUTTON & SWITCHES

CONTROL ELEMENTS

| INDICATION LED LAMP | | |
|---------------------|-------------------------------|--------|
| Code | Voltage | Color |
| AD22-22DS | 230V/110V/48V/24V/12V (AC/DC) | Green |
| | | Red |
| | | Blue |
| | | Yellow |
| | | White |
| | | Amber |



AD22-22DS



WITH BUZZER

PLASTIC SERIES BUTTON

| | |
|-------------|--|
| AD22-22DS | BUZZER WITH RED BACKLIGHT 230V AC |
| DB2-ES542 | EMERGENCY PUSH BUTTON (NC) |
| DB2-ED21 | SELECTOR SWITCH 2 POSITIONS (NO) |
| DB2-ED33 | SELECTOR SWITCH 3 POSITIONS (NO+NO) |
| DB2-EA31 | PUSH BUTTON (SPRING) GREEN NO |
| DB2-EA42 | PUSH BUTTON (SPRING) RED NC |
| DB2-EA61 | PUSH BUTTON (SPRING) BLUE NO |
| DB2-EA21 | PUSH BUTTON (SPRING) BLACK NO |
| DB2-EA55 | PUSH BUTTON (SPRING) YELLOW NO |
| (DB2)-EL825 | PUSH BUTTON DOUBLE RED & GREEN |



METAL SERIES BUTTON

| | |
|------------|---|
| DB2-BS542 | EMERGENCY BUTTON-2 POSITION-1 NC |
| DB2-BD21 | SELECTOR SWITCH-2 POSITION-1 NO |
| DB2-BD33 | SELECTOR SWITCH-3 POSITION-1 NO+1 NO |
| DB2-BA31 | GREEN PUSH BUTTON-1 NO |
| DB2-BA42 | RED PUSH BUTTON-1 NC |
| DB2-BA61 | BLUE PUSH BUTTON-1 NO |
| DB2-BA21 | BLACK PUSH BUTTON-1 NO |
| DB2-BA51 | YELLOW PUSH BUTTON-1 NO |
| DB2-BL8345 | START-STOP DOUBLE |

| | |
|-------|-------------------|
| BE101 | CONTACT NO |
| BE102 | CONTACT NC |

BUTTON BOXES

| | |
|-------------|--|
| XAL-D01 | EMPTY VUTTON BOX WITH HOLE |
| XAL-J188H29 | EMERGENCY BUTTON WITH BOX, WITH KEY |
| XAL-J174H29 | EMERGENCY BUTTON WITH BOX |
| XAL-B213 | RED-GREEN PUSH BUTTON BOX |
| XAL-B112 | RED PUSH BUTTON BOX |
| XAL-B101 | GREEN PUSH BUTTON BOX |
| COB61C | 2BUTTON+EMERGENCY |
| COB62C | 4BUTTON+EMERGENCY |
| COB63C | 6BUTTON+EMERGENCY |
| COB64C | 8BUTTON+EMERGENCY |

| | | | |
|-----------|--|---------|--|
| PPA-101 | | PPA-103 | |
| PPA-101-5 | | PPA-104 | |
| PPA-102 | | MA-22-1 | |





ELECTRONZ+

sales@electronqatar.com ✉

www.electronqatar.com 🌐

Whatsapp Hotline: 3994-2201 📞

| Cam Switches | POLE | STEP |
|---------------------------|--------|------|
| On/Off Cam Switches | 1 to 6 | |
| Change Over Switches | 1 to 4 | |
| Multi Steps Cam Switches | 1 | 2 |
| | | 3 |
| | | 4 |
| | | 5 |
| | | 7 |
| Star-Delta Control Switch | 3 | 4 |
| | 4 | |

CAM SWITCHES



ON-OFF CAM SWITCHES



CHANGE OVER CAM SWITCHES



STAR DELTA CAM SWITCHES



MULTI STEPS CAM SWITCHES



SPRING
RETURN
COVER
SAFETY CAM
SWITCH

LOCKABLE
HANDLE

MOUNTING &
KEY LOCK



ELECTRONZ+

Onka®

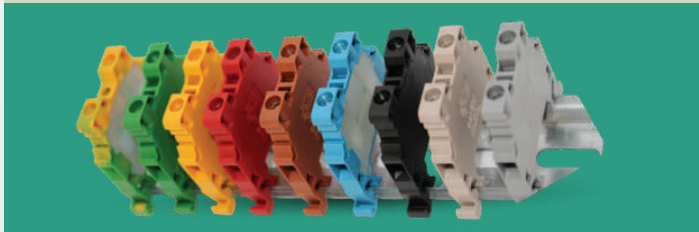
sales@electronqatar.com ✉

www.electronqatar.com 🌐

Whatsapp Hotline: 3994-2201 📞

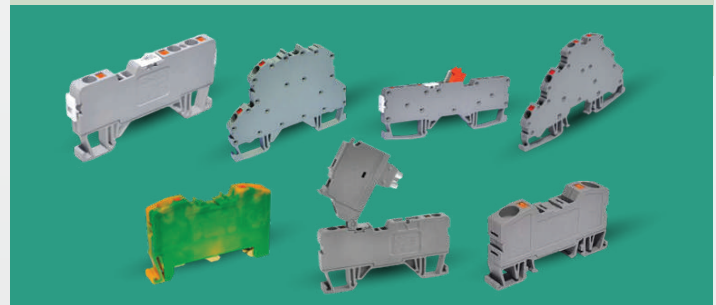
TERMINAL BLOCKS SCREWTYPE

| BLACK | RED | BLUE | GREY | UL |
|-------|------|------|------|--------------------|
| 1004 | 1007 | 1005 | 1002 | 1.5mm ² |
| 904 | 907 | 905 | 902 | 2.5mm ² |
| 914 | 917 | 915 | 912 | 4mm ² |
| 1034 | 1037 | 1035 | 1032 | 6mm ² |
| 1044 | 1047 | 1045 | 1042 | 10mm ² |
| 1054 | 1057 | 1055 | 1052 | 16mm ² |
| 1064 | 1067 | 1065 | 1062 | 35mm ² |
| 1074 | 1077 | 1075 | 1072 | 50mm ² |
| 1084 | 1087 | 1085 | 1082 | 70mm ² |
| 1094 | 1097 | 1095 | 1092 | 95mm ² |
| 1104 | 1107 | 1105 | 1102 | 120mm ² |



TERMINAL BLOCKS PUSH IN TYPE

| BLACK | RED | BLUE | GREY | UL |
|-------|------|------|------|--------------------|
| 1504 | 1507 | 1505 | 1502 | 2.5mm ² |
| 1514 | 1517 | 1515 | 1512 | 4mm ² |
| 1524 | 1527 | 1525 | 1522 | 6mm ² |
| 1534 | 1537 | 1535 | 1532 | 10mm ² |
| 1544 | 1547 | 1545 | 1542 | 16mm ² |
| 1054 | 1557 | 1555 | 1552 | 35mm ² |



TERMINAL BLOCK

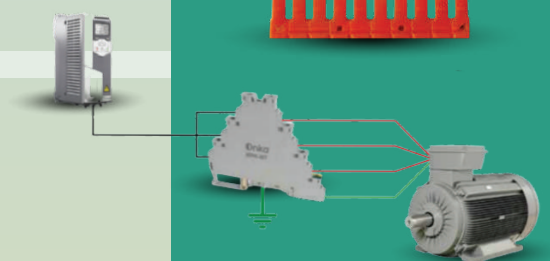
- 1612 **SCREW TYPE 2,5mm² DOUBLED RAIL TERMINAL GREY**
- 1010425 **MRK 2,5mm² TRIPLE LEVEL SCREW CONNECTION RAIL TERMINAL BLOCK**
- 1010412 **MRK 2,5mm² SCREW CONNECTION MOTOR TERMINAL BLOCK**
- 1652 **SCREW TYPE MRK 4mm² DOUBLED RAIL TERMINAL GREY**
- 1322 **MRK-S 6mm² SCREWED FUSE RAIL TERMINAL BLOCKS EMPTY GREY**
- 1352 **MRK-S 6mm² FUSED TERMINAL BLOCK(24V AC/DC LED)**

- 1291 **MRK TEST - 6mm Terminal Block (W/O) prob (CT TEST TERMINAL)**
- 1322 **6mm² SCREWED TESTING RAIL TERMINAL BLOCKS Double Expulsive GREY, knife type**

- 1291 **MTK 2,5mm² SCREWED EARTH RAIL TERMINAL BLOCKS**
- 1010425 **MTK 4mm² SCREWED EARTH RAIL TERMINAL BLOCKS**
- 1010412 **MTK 6-10mm² SCREWED EARTH RAIL TERMINAL BLOCKS**
- 1652 **MTK 16mm² SCREWED EARTH RAIL TERMINAL BLOCKS**
- 1322 **MTK 35mm² SCREWED EARTH RAIL TERMINAL BLOCKS**

- 1202 **SCREWLESS END BRACKET FOR MPK OPK TERMINAL BLOCK GREY**
- UK-E **MINI END BRACKET FOR MRK OPK TERMINAL BLOCKS GREY**
- 1232 **END BRACKET WITH LABEL FOR MRK AND OPK TERMINAL BLOCKS**
- MRK-G **GREY**
- 582 **GROUP MARKER**
- MRK SERIES SEPARATION PLATE**

1.5/2.5/4/6/10/16/35MM SHORTLINK CROSS CONNECTION (2/4/10POLES)





ELECTRONZ+

sales@electronqatar.com ✉

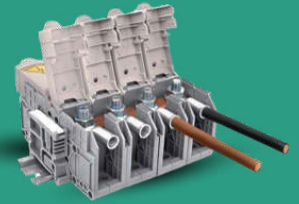
www.electronqatar.com 🌐

Whatsapp Hotline: 3994-2201 📞

TERMINALS

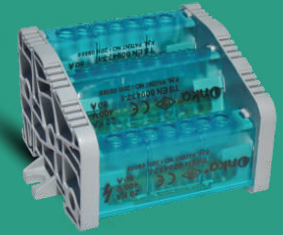
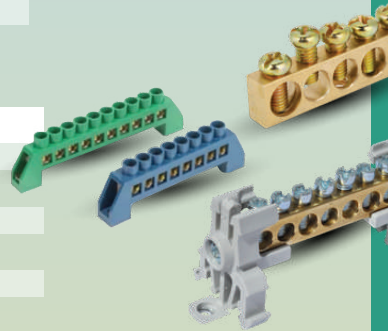
STUD TERMINALS WITH COVER

| | |
|------|------------------------|
| 2302 | MRK 26mm ² |
| 2322 | MRK 35mm ² |
| 2342 | MRK 50mm ² |
| 2362 | MRK 70mm ² |
| 2382 | MRK 95mm ² |
| 2402 | MRK 120mm ² |
| 2422 | MRK 150mm ² |
| 2442 | MRK 185mm ² |
| 2462 | MRK 240mm ² |



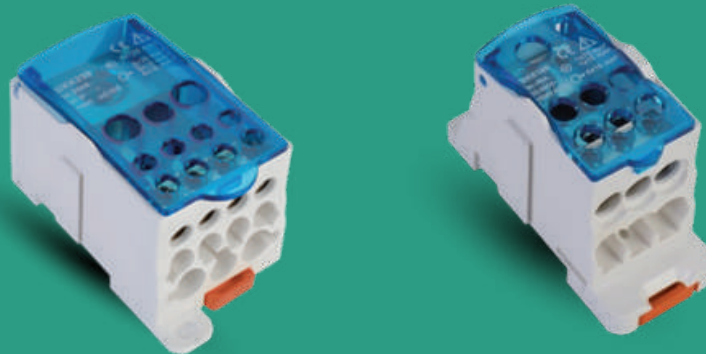
EARTH AND NEUTRAL BARS

| Rated Current | Cross Section | Poles | Holes |
|---------------|---------------|-------|-------|
| 80A | 6.5 x 9mm | 1 | 7 |
| 160A | 6.5 x 12mm | 2 | 10 |
| 250A | 10 x 15mm | 3 | 12 |
| | | 4 | 15 |
| | | | 22 |



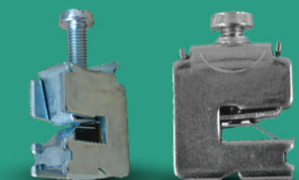
DISTRIBUTION UNITS

| | |
|---------|---|
| UKK-80 | DISTRIBUTION UNIT 80A, IN: 1x6-16, OUT: 4X2,5-6 & 2x2,5-16 |
| UKK-125 | DISTRIBUTION UNIT 125A, IN: 1x10-35, OUT: 6X2,5-16 & 1x6-16 |
| UKK-160 | DISTRIBUTION UNIT 160A, IN: 1x10-70, OUT: 6X2,5-16 & 1x6-16 |
| UKK-250 | DISTRIBUTION UNIT 250A, IN: 1x35-120, OUT: 4X2,5-10 & 5x2,5-16 & 2x6-35mm |
| UKK-400 | DISTRIBUTION UNIT 400A, IN: 1x95-180, OUT: 4X2,5-10 & 5x2,5-16 & 2x6-35mm |



STUD TERMINALS WITH COVER

| | |
|------|---|
| 2140 | SK16 F5 CONNECTION TERMINAL for CU-BUSBARS 1,5-16mm ² |
| 2141 | SK16 F10 CONNECTION TERMINAL for CU-BUSBARS 1,5-16mm ² |
| 2142 | SK35 F5 CONNECTION TERMINAL for CU-BUSBARS 1,5-35mm ² |
| 2143 | SK35 F10 CONNECTION TERMINAL for CU-BUSBARS 1,5-35mm ² |
| 2144 | SK70 F5 CONNECTION TERMINAL for CU-BUSBARS 16-70mm ² |
| 2145 | SK70 F10 CONNECTION TERMINAL for CU-BUSBARS 16-70mm ² |
| 2146 | SK120 F5 CONNECTION TERMINAL for CU-BAR 16-70mm ² |
| 2147 | SK120 10 CONNECTION TERMINAL for CU-BAR 16-70mm ² |





ELECTRONZ+

DURMAZ

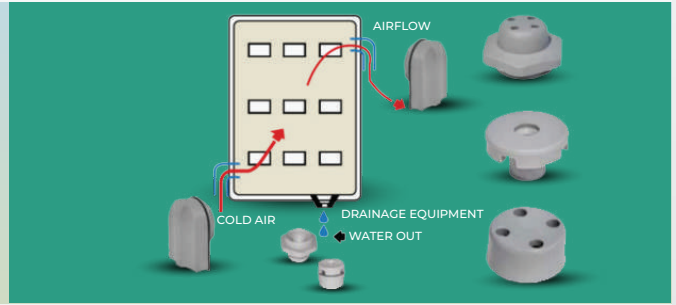
sales@electronqatar.com ✉

www.electronqatar.com 🌐

Whatsapp Hotline: 3994-2201 📞

DERANGE AND VENTILATION PARTS

| | |
|------|---------------------------------|
| 9511 | PANEL AIRFLOW BLIND STOP M25X15 |
| 9501 | PANEL AIRFLOW EQUIPMENT |
| 9521 | DRENAGE EQUIPMENT M16 |



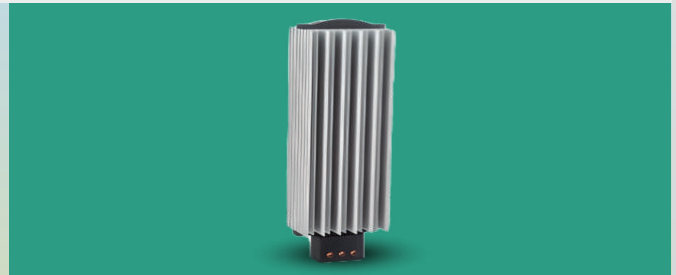
PANEL THERMOSTAT

| | |
|--------|---------------------------|
| DPT-B | THERMOSTAT (NO) BLUE-COLD |
| DPT-R | THERMOSTAT (NC) RED-HOT |
| DPH-01 | HYGROSTAT (NO) |



HEATERS

| | |
|---------|--------------------------------|
| MPH-30 | PANEL HEATER 25-30W |
| MPH-50 | PANEL HEATER 50W |
| MPH-75 | PANEL HEATER 75W-HIGH QUALITY |
| MPH-100 | PANEL HEATER 100W-HIGH QUALITY |
| MPH-150 | PANEL HEATER 150W-HIGH QUALITY |



HEATERS

| | |
|---------|--|
| DF100 | LOUVER (FILTER) 100x100 |
| DF150 | LOUVER (FILTER) 150x150 |
| DF250 | LOUVER (FILTER) 250x250 |
| DF300 | LOUVER (FILTER) 325x325 |
| DFF1001 | FAN-FILTER 110x110mm 40/50 m3/h |
| DFF1501 | FAN-FILTER 160x160mm 100/140 m3/h |
| DFF2502 | FAN-FILTER 250x250mm 240/270 m3/h |
| DFF2503 | FAN-FILTER 250x250mm 650/900 m3/h |
| DFF3001 | FAN-FILTER 325x325mm 650/900 m3/h |
| ATY4000 | ROOF FAN AXIAL 172X163X51 25/32W, 400m3/h |
| ATY5600 | ROOF FAN RADIAL 190X68X58 75W, 560m3/h |
| ATY9700 | ROOF FAN RADIAL 220X71X85 90W, 970m3/h |



FAN & HEATERS



ELECTRONZ+ PANEL LOCKS



MS813



MS705-1



MS705-3B



MS705-3S



MS811-1



LG006



MS403-20



MS705-4



MS705-28



Rack Cabinet Lock



MS702



MS705



MS408-1



MS714-2



K7030

K7040



MS240-2

MS240-1



212.R

PANEL HINGES



CL224-3A



CL125



CL211



CL225-1A



CL202-2



CL218-40B



CL206-1



CL204-7



CL138-1



CL214-1

PANEL LOCKS & HINGES



ELECTRONZ+

sales@electronqatar.com ✉

www.electronqatar.com 🌐

Whatsapp Hotline: 3994-2201 📞

PANEL ACCESSORIES

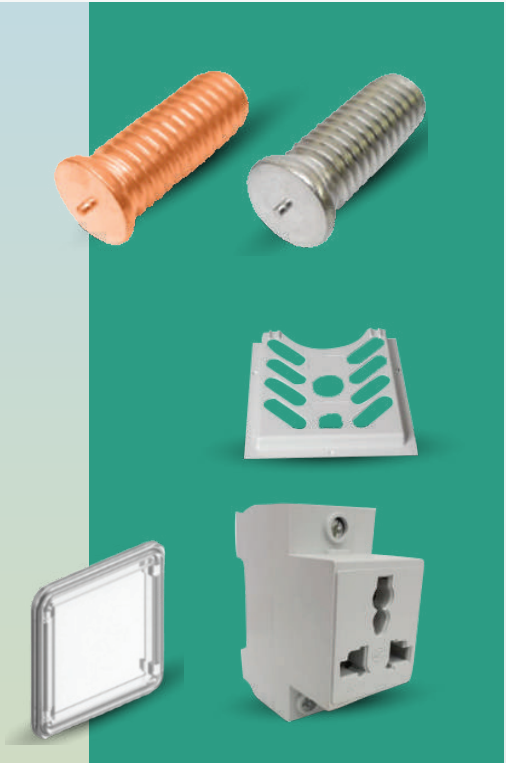
PANEL ACCESSORIES

| CODE | METRIC | SIZE |
|-------|--------|------|
| M6-12 | M6 | 12 |
| M6-16 | | 16 |
| M6-20 | | 20 |
| M8-30 | M8 | 30 |
| M8-35 | | 35 |
| M8-50 | | 50 |

IRPCP-504 **A5 project plastic pocket with adhesive**
 IRPCP-404 **A4 project plastic pocket with adhesive**

717-V1 **METER GLASS PLASTIC COVER, SCREW TYPE**
 717-V2 **METER GLASS PLASTIC COVER, CLIPS TYPE**

DRS-01 **DIN RAIL SOCKET BS STANDARD**

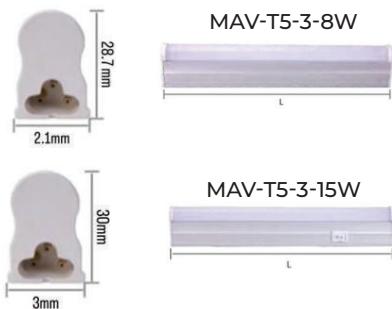


CABLE MANAGEMENT

IRPKT-1040 **66 Plastic Cable Holder**
 IRPKT-1050 **BELLOW/18x64 Siemens**



PANEL LIGHT



LIMIT SWITCH



PANEL LED SW METAL ON/OFF BUTTON



LED ON/OFF SWITCH





ELECTRONZ+

sales@electronqatar.com ✉

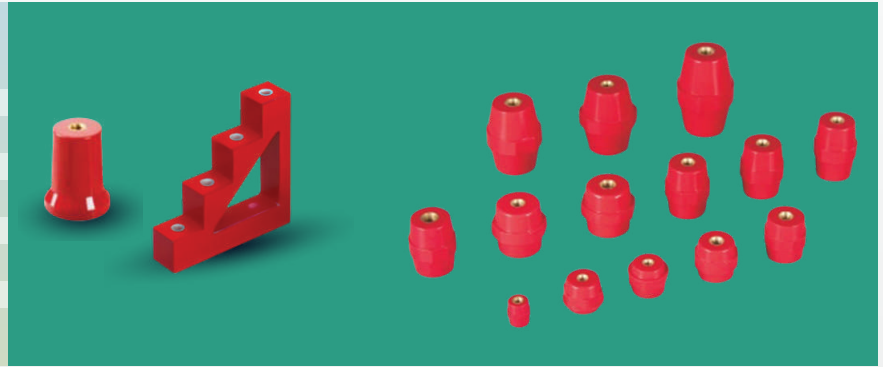
www.electronqatar.com 🌐

Whatsapp Hotline: 3994-2201 📞

INSULATORS / TRUNKING / RAILS / GLANDS

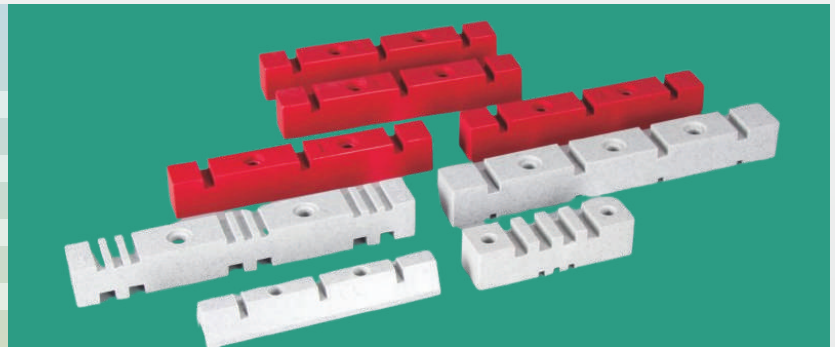
HEX INSULATORS

| | |
|--------------|--------------------|
| HEX-SM20-M4 | SM 20-M4 qualityA |
| HEX-SM25-M8 | SM 25-M8 qualityA |
| HEX-SM35-M8 | SM 35-M8 qualityA |
| HEX-SM40-M8 | SM 40-M8 qualityA |
| HEX-SM51-M8 | SM 51-M8 qualityA |
| HEX-SM51-M10 | SM 51-M10 qualityA |
| HEX-SM60-M10 | SM 60-M10 qualityA |
| HEX-SM76-M10 | SM 76-M10 qualityA |



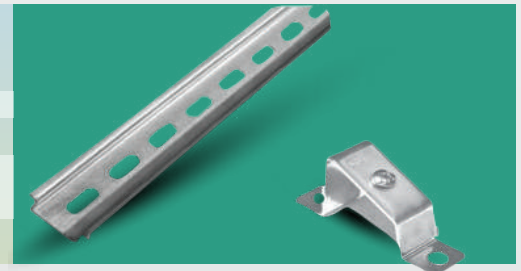
BUSBAR SUPPORTER

| | |
|-----------|---|
| EL-130 | 11mm Slots 1 Poles 4 Runs |
| EL-270 | 11mm Slots 3 Poles 2 Runs |
| EL-295 | 11mm Slots 4 Poles 1 Runs |
| EL-409 | 11mm Slots 4 Poles 2 Runs |
| EL-500 | 11mm Slots 4 Poles 3 Runs |
| EL-500-V2 | 11mm Slots 3 Poles 3 Runs+1 Pole 2 Runs |



DIN RAIL

| | |
|------|--|
| 4172 | MOUNTING DIN RAIL SUPPORT Cr+3 Plated |
| 4222 | 35x7,5mm ² PERFORATED SHEET W AUTOMATE ASSEMBLY DIN RAIL 1mt GALVANIZED |
| 4223 | 35x7,5mm ² PERFORATED SHEET W AUTOMATE ASSEMBLY DIN RAIL 2mt GALVANIZED |



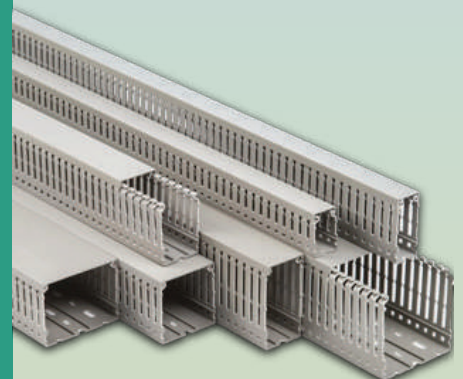
CABLE GLAND (IP68 POLIAMIDE)

| | |
|------|---------|
| 9101 | PG 7 |
| 9111 | PG 9 |
| 9121 | PG 11 |
| 9131 | PG 13.5 |
| 9141 | PG 16 |
| 9151 | PG 21 |
| 9161 | PG 25 |
| 9171 | PG 36 |
| 9181 | PG 42 |
| 9191 | PG 48 |



CABLE TRUNKING

| | | |
|--------|---------|--------|
| 25X30 | 40X40 | 60x40 |
| 25X40 | 40X60 | 60x60 |
| 25X60 | 40X80 | 60x80 |
| 25X80 | 40X100 | 60x100 |
| 80X60 | 100X60 | |
| 80X80 | 100X100 | |
| 80X100 | | |



BLINE STOP (IP68 POLIAMIDE)

| | |
|------|---------|
| 9301 | PG 7 |
| 9311 | PG 9 |
| 9321 | PG 11 |
| 9331 | PG 13.5 |
| 9341 | PG 16 |
| 9351 | PG 21 |
| 9361 | PG 29 |
| 9371 | PG 36 |



CABLE ENDS & LUGS

CORD END TERMINAL

| | |
|-----------|---------------------------------------|
| ONKA-8007 | 0.5mm ² (BIG BOX 1000PCS) |
| ONKA-8010 | 0.75mm ² (BIG BOX 1000PCS) |
| ONKA-8014 | 1.0mm ² (BIG BOX 1000PCS) |
| ONKA-8017 | 1.5mm ² (BIG BOX 1000PCS) |
| ONKA-8021 | 2.5mm ² (BIG BOX 500PCS) |
| ONKA-8025 | 4mm ² (BIG BOX 500PCS) |
| ONKA-8028 | 6mm ² (BIG BOX 250PCS) |
| ONKA-8030 | 10mm ² (BIG BOX 100PCS) |
| ONKA-8032 | 16mm ² (BIG BOX 100PCS) |
| ONKA-8034 | 25mm ² (BIG BOX 50PCS) |
| ONKA-8036 | 35mm ² (BIG BOX 50PCS) |
| ONKA-8039 | 50mm ² (BIG BOX 25PCS) |
| ONKA-8041 | 70mm ² (BIG BOX 25PCS) |



TWIN CORD END TERMINAL

| | |
|-----------|--|
| ONKA-8161 | 2x 0,50mm ² (BIG BOX 1000PCS) |
| ONKA-8162 | 2x 0,75mm ² (BIG BOX 500PCS) |
| ONKA-8164 | 2x 1,0mm ² (BIG BOX 500PCS) |
| ONKA-8166 | 2x 1,5mm ² (BIG BOX 500PCS) |
| ONKA-8168 | 2x 2,5mm ² (BIG BOX 250PCS) |
| ONKA-8170 | 2x 4,0mm ² (BIG BOX 200PCS) |
| ONKA-8171 | 2x 6,0mm ² (BIG BOX 100PCS) |
| ONKA-8172 | 2x 10,0mm ² (BIG BOX 50PCS) |
| ONKA-8173 | 2x 16,0mm ² (BIG BOX 50PCS) |

RING TYPE TERMINAL

| | |
|-----------|-----------------------------|
| ONKA-8045 | 0,5-1,5 mm ² M3 |
| ONKA-8049 | 0,5-1,5 mm ² M4 |
| ONKA-8051 | 0,5-1,5 mm ² M5 |
| ONKA-8052 | 0,5-1,5 mm ² M6 |
| ONKA-8053 | 0,5-1,5 mm ² M8 |
| ONKA-8056 | 0,5-2,5 mm ² M3 |
| ONKA-8060 | 0,5-2,5 mm ² M4 |
| ONKA-8087 | 0,5-2,5 mm ² M5 |
| ONKA-8089 | 0,5-2,5 mm ² M6 |
| ONKA-8090 | 0,5-2,5 mm ² M8 |
| ONKA-8091 | 0,5-2,5 mm ² M10 |
| ONKA-8093 | 0,5-2,5 mm ² M12 |
| ONKA-8095 | 4,0-6,0 mm ² M4 |
| ONKA-8096 | 4,0-6,0 mm ² M5 |
| ONKA-8097 | 4,0-6,0 mm ² M6 |
| ONKA-8098 | 4,0-6,0 mm ² M8 |
| ONKA-8099 | 4,0-6,0 mm ² M10 |



CABLE LUG

| |
|--------------------------------------|
| 6mm ² M5 |
| 10mm ² M5, M6, M8 |
| 16mm ² M5, M6, M8,M10 |
| 25mm ² M6, M8,M10,M12 |
| 35mm ² M6, M8,M10,M12 |
| 50mm ² M6, M8,M10,M12 |
| 70mm ² M8,M10,M12,M14,M16 |
| 95mm ² M12 |
| 120mm ² M12 |
| 150mm ² M14 |
| 185mm ² M16 |
| 240mm ² M16 |



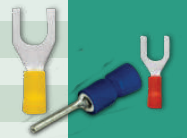
TWIN CORD END TERMINAL

| | |
|--------------|----------------------------------|
| 8186-PT1-10V | 0,5-1,5 mm ² W:1,9 mm |
| 8188-PT2-12V | 1,5-2,5 mm ² W:1,9 mm |
| 8190-PT5-13V | 4,0-6,0 mm ² W:2,8 mm |



CORD END TERMINAL

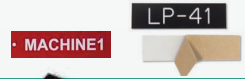
| | |
|-----------|----------------------------|
| ONKA-8061 | 0,5-1,5 mm ² M3 |
| ONKA-8064 | 0,5-1,5 mm ² M4 |
| ONKA-8066 | 0,5-1,5 mm ² M5 |
| ONKA-8068 | 0,5-1,5 mm ² M6 |
| ONKA-8070 | 1,5-2,5 mm ² M3 |
| ONKA-8072 | 1,5-2,5 mm ² M4 |
| ONKA-8074 | 1,5-2,5 mm ² M5 |
| ONKA-8075 | 1,5-2,5 mm ² M6 |
| ONKA-8077 | 4,0-6,0 mm ² M4 |
| ONKA-8079 | 4,0-6,0 mm ² M5 |
| ONKA-8080 | 4,0-6,0 mm ² M6 |
| ONKA-8082 | 4,0-6,0 mm ² M8 |



LUGS



TRAFFOLYTE ENGRAVING SHEETS



Traffolyte engraving sheets

| | |
|------------------|--|
| EN.SH.12.6.15.BK | BLACK FACE WHITE LETTER (120*60cm, 1.5mm) |
| EN.SH.12.6.15.W | WHITE FACE BLACK LETTER (120*60cm, 1.5mm) |
| EN.SH.12.6.15.WL | LASER TYPE WHITE FACE BLACK LETTER (120*60cm, 1.5mm) |



Cable Ties

| | | | | | |
|-----------|-----------|-----------|-----------|------------|-------------|
| 2.5x80mm | 3.6x150mm | 4.8x200mm | 7.6x400mm | 8.8x400mm | 12.4x230mm |
| 2.5x100mm | 3.6x200mm | 4.8x250mm | 7.6x450mm | 8.8x450mm | 12.4x290mm |
| 2.5x120mm | 3.6x250mm | 4.8x360mm | 7.6x500mm | 8.8x500mm | 12.4x380mm |
| 2.5x130mm | 3.6x300mm | 4.8x400mm | 7.6x550mm | 8.8x550mm | 12.4x480mm |
| 2.5x150mm | 3.6x370mm | 4.8x450mm | 7.6x610mm | 8.8x710mm | 12.4x530mm |
| 2.5x200mm | | 4.8x500mm | 7.6x750mm | 8.8x750mm | 12.4x580mm |
| 2.5x260mm | | 4.8x550mm | | 8.8x760mm | 12.4x650mm |
| 2.5x380mm | | 4.8x610mm | | 8.8x780mm | 12.4x730mm |
| | | 4.8x920mm | | 8.8x810mm | 12.4x880mm |
| | | | | 8.8x920mm | 12.4x1000mm |
| | | | | 8.8x1020mm | |
| | | | | 8.8x1168mm | |
| | | | | 8.8x1220mm | |
| | | | | 8.8x1530mm | |



| | |
|--------|-----------------------|
| HS-101 | CABLE TIE MOUNT 21X21 |
| HS-102 | CABLE TIE MOUNT 28X28 |

Spiral

| | |
|----------|-----------------------|
| SPR-06-W | SPIRAL 6MM WHITE 10M |
| SPR-08-W | SPIRAL 8MM WHITE 10M |
| SPR-10-W | SPIRAL 10MM WHITE 10M |
| SPR-12-W | SPIRAL 12MM WHITE 10M |
| SPR-20-W | SPIRAL 20MM WHITE 10M |



Spiral

| | |
|--------|---------------------------------------|
| IT-R | 0.13mm*18mm*10y pvc tape red |
| IT-Y | 0.13mm*18mm*10y pvc tape yellow |
| IT-B | 0.13mm*18mm*10y pvc tape blue |
| IT-BK | 0.13mm*18mm*10y pvc tape black |
| IT-G/Y | 0.13mm*18mm*10y pvc tape green/yellow |



Cable Marker

| | |
|-----------|--|
| EC-0.10-X | EC-0 1mm ² (From 0.75mm ² to 3mm ²) |
| EC-0.15-X | EC-0 1.5mm ² (From 1.5mm ² to 3mm ²) |
| EC-1.25-X | EC-1 2.5mm ² (From 2.5mm ² to 4.2mm ²) |
| EC-3.06-X | EC-3 6mm ² (From 5mm ² to 10mm ²) |





ELECTRONZ+

sales@electronqatar.com ✉

www.electronqatar.com 🌐

Whatsapp Hotline: 3994-2201 📞

TERMINAL BLOCK MARKING

| | |
|-----------|--|
| 8912-AX | ARGOX CP2140 Thermal Printer |
| 8944-55 | 55 mm X 300 mt Black Ribbon |
| 9944-110 | 110 mm x 300 mt Black Ribbon |
| 9943-S11 | 11 mm X 2 X 20 mt Double Roll Label (White) |
| 9943-S11S | 11 mm X 2 X 20 mt Double Roll Label (Yellow) |
| 8843-S4.9 | 4,9 mm X 5 X 20 mt Roll Label |



OD10-CUS CUSTOMIZED LABEL

| | |
|-------------|-------------------------------|
| 9541-01-10 | OD5B NUMBERING Printed 1~10 |
| 9541-11-20 | OD5B NUMBERING Printed 11~20 |
| 9541-21-30 | OD5B NUMBERING Printed 21~30 |
| 9541-31-40 | OD5B NUMBERING Printed 31~40 |
| 9541-41-50 | OD5B NUMBERING Printed 41~50 |
| 9541-51-60 | OD5B NUMBERING Printed 51~60 |
| 9541-61-70 | OD5B NUMBERING Printed 61~70 |
| 9541-71-80 | OD5B NUMBERING Printed 71~80 |
| 9541-81-90 | OD5B NUMBERING Printed 81~90 |
| 9541-91-100 | OD5B NUMBERING Printed 91~100 |



TOOLS

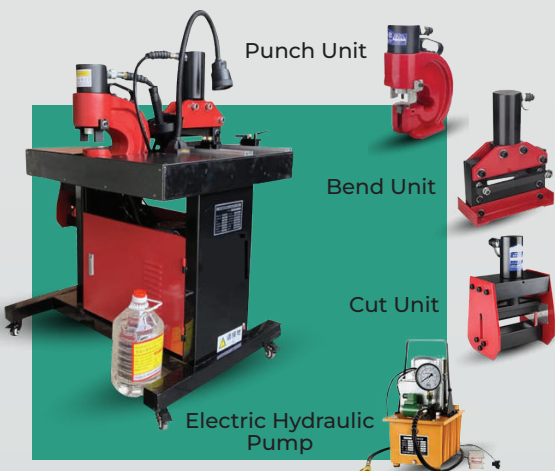
PANEL METERS BUTTONS & INDICATORS HOLES PUNCHING MACHINE



SHEET ENGRAVING MACHINE

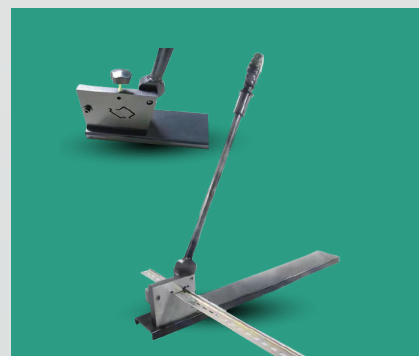


BUSBAR STATION



TRUNKING CUTTER

| | |
|--------|-----------------------------------|
| RCC-01 | RAIL CUTTER 15X35 & 7.5X35 |
| RCC-02 | RAIL CUTTER FOR 7.5X35 BLUE COLOR |
| TCC-01 | OD5B NUMBERING Printed 21~30 |



PLC PRODUCTS



PLC CPU Module



Mini PLC With Display



Ethernet Modules



VFD Speed Controller



Operator Panels



Servo Motor Drive



Step Motor Drive



Encoder

AUTOMATION

PLC SENSORS



Photoelectric Sensor



Inductive Proximity Sensor



Array Sensor



Color Sensor



Fiber-Optic Sensor



Fork Sensor



Glare Sensor



Linear Measurement Sensor



Luminescence Sensor



Cylinder Sensor



Magnetic Sensor



ELECTRONZ+

sales@electronqatar.com ✉

www.electronqatar.com 🌐

Whatsapp Hotline: 3994-2201 📞

FLOW & COOLING & HEATING

TRANSMITTERS



Humidity and Temperature Controller



Air Quality Transmitters



Temperature Transmitter



Industrial Heater



CO2 Transmitter



Temperature Transmitter



Freeze Thermostat



Differential Pressure Transmitter



Hydrostatic Level Transmitter

CONTROLLERS



HVAC Controller



PID Temperature Controller

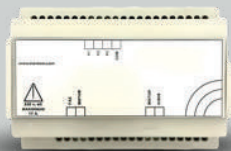
SWITCHES



Pressure Switch



Differential Pressure Switch



PID Temperature Controller

ACTUATORS



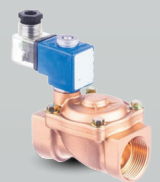
Fan Coil Multiplexing Board



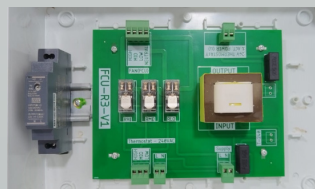
Pneumatic Actuators



Damper Actuators



Solenoid Valve



(FCU) Fan Speed Relay Box



ELECTRONZ+

sales@electronqatar.com ✉

www.electronqatar.com 🌐

Whatsapp Hotline: 3994-2201 📞

SPLICING CONNECTOR (WAGO TYPE)

| CODE | INPUT | VOLT | CURRENT | PCS/BOX |
|---------|-------|------|---------|---------|
| SCT-212 | 2 | 450V | 32A | 100 |
| SCT-213 | 3 | | | 100 |
| SCT-214 | 4 | | | 50 |
| SCT-215 | 5 | | | 50 |

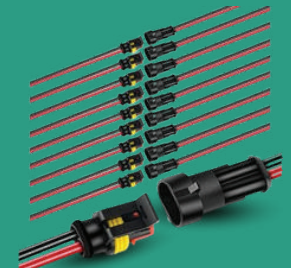


IP68 Waterproof Cable Connector-Type T



2 Pin Connector Waterproof Connector

| CODE | INPUT | VOLT | CURRENT | PCS/BOX |
|---------|-------|------|---------|---------|
| SCT-411 | 2 | 450V | 32A | 50 |
| SCT-2-2 | 2 | | | |
| SCT-3-3 | 3 | | | |
| SCT-4-4 | 4 | | | |
| SCT-5-5 | 5 | | | |



Male and Female Way

TERMINALS

STRIPS CONNECTOR

| | |
|------|--|
| 5001 | NR.1 2,5-4mm ² PP POLYPROPYLEN TERMINAL STRIPS 12 POLES |
| 5002 | NR.2 4-6mm ² PP POLYPROPYLEN TERMINAL STRIPS 12 POLES |
| 5003 | NR.3 6-10mm ² PP POLYPROPYLEN TERMINAL STRIPS 10 POLES |
| 5004 | NR.4 10-16mm ² PP POLYPROPYLEN TERMINAL STRIPS 6 POLES |
| 5005 | NR.5 16-25mm ² PP POLYPROPYLEN TERMINAL STRIPS 6 POLES |
| 5011 | NR.1 2,5-4mm ² PA POLYAMIDE (V2) TERMINAL STRIPS 12 POLES |
| 5012 | NR.2 4-6mm ² PA POLYAMIDE (V2) TERMINAL STRIPS 12 POLES |
| 5013 | NR.3 6-10mm ² PA POLYAMIDE (V2) TERMINAL STRIPS 10 POLES |
| 5014 | NR.4 10-16mm ² PA POLYAMIDE (V2) TERMINAL STRIPS 6 POLES |
| 5015 | NR.5 16-25mm ² PA POLYAMIDE (V2) TERMINAL STRIPS 6 POLES |



STRIPS CONNECTOR

| CODE | POLE | CABLE SECTION |
|---------|------|---------------|
| 1070001 | 2 | 0,75-1,50 |
| 1070002 | 2 | 2,50-4,00 |
| 1070003 | 3 | 2,50-4,00 |
| 1070004 | 2 | 4,00-6,00 |
| 1070005 | 3 | 4,00-6,00 |
| 1070006 | 2 | 6,00-10,00 |
| 1070007 | 3 | 6,00-10,00 |
| 1070008 | 1 | 0,75-1,50 |
| 1070009 | 1 | 2,50-4,00 |
| 1070010 | 1 | 4,00-6,00 |
| 1070011 | 1 | 6,00-10,00 |
| 1070013 | 3 | 16,00-25,00 |
| 1070014 | 2 | 16,00-25,00 |





ELECTRONZ+

sales@electronqatar.com ✉

www.electronqatar.com 🌐

Whatsapp Hotline: 3994-2201 📞

CONNECTORS AND SOCKETS

CODE INDUSTRIAL SOCKET, PANEL MOUNT, IP67

| | |
|---------------|--------------------------------|
| BC1-6505-7413 | 125A 5 PINS (3P+E+N) - 3 PHASE |
| BC1-4505-7413 | 63A 5 PINS (3P+E+N) - 3 PHASE |
| BC1-3505-7413 | 32A 5 PINS (3P+E+N) - 3 PHASE |
| BC1-1505-7413 | 16A 5 PINS (3P+E+N) - 3 PHASE |
| BC1-3403-7413 | 32A PINS (1P+N+E) - 1 PHASE |
| BC1-1403-7413 | 16A 3 PINS (1P+N+E) - 1 PHASE |

OTHER ARRANGEMENTS ARE AVAILABLE, PLEASE CHECK CATALOG

CODE CONNECTOR SOCKET, IP67

| | |
|---------------|--------------------------------|
| BC1-6505-7312 | 125A 5 PINS (3P+E+N) - 3 PHASE |
| BC1-4505-7312 | 63A 5 PINS (3P+E+N) - 3 PHASE |
| BC1-3505-7312 | 32A 5 PINS (3P+E+N) - 3 PHASE |
| BC1-1505-7312 | 16A 5 PINS (3P+E+N) - 3 PHASE |
| BC1-3403-7312 | 32A PINS (1P+N+E) - 1 PHASE |
| BC1-1403-7312 | 16A 3 PINS (1P+N+E) - 1 PHASE |

OTHER ARRANGEMENTS ARE AVAILABLE, PLEASE CHECK CATALOG

CODE CONNECTOR SOCKET, IP67

| | |
|---------------|--------------------------------|
| BC1-6505-7413 | 125A 5 PINS (3P+E+N) - 3 PHASE |
| BC1-4505-7413 | 63A 5 PINS (3P+E+N) - 3 PHASE |
| BC1-3505-7413 | 32A 5 PINS (3P+E+N) - 3 PHASE |
| BC1-1505-7413 | 16A 5 PINS (3P+E+N) - 3 PHASE |
| BC1-3403-7413 | 32A PINS (1P+N+E) - 1 PHASE |
| BC1-1403-7413 | 16A 3 PINS (1P+N+E) - 1 PHASE |

OTHER ARRANGEMENTS ARE AVAILABLE, PLEASE CHECK CATALOG

CODE INDUSTRIAL PLUG, IP67

| | |
|---------------|--------------------------------|
| BC1-6505-7011 | 125A 5 PINS (3P+E+N) - 3 PHASE |
| BC1-4505-7011 | 63A 5 PINS (3P+E+N) - 3 PHASE |
| BC1-3505-7011 | 32A 5 PINS (3P+E+N) - 3 PHASE |
| BC1-1505-7011 | 16A 5 PINS (3P+E+N) - 3 PHASE |
| BC1-3403-7011 | 32A PINS (1P+N+E) - 1 PHASE |
| BC1-1403-7011 | 16A 3 PINS (1P+N+E) - 1 PHASE |

OTHER ARRANGEMENTS ARE AVAILABLE, PLEASE CHECK CATALOG



MULTI-PIN MACHINE SOCKET

METAL 16PIN

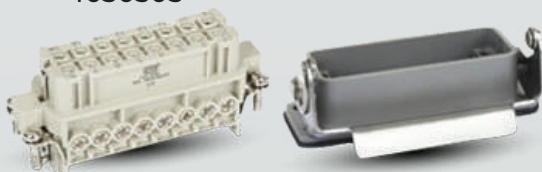
403030



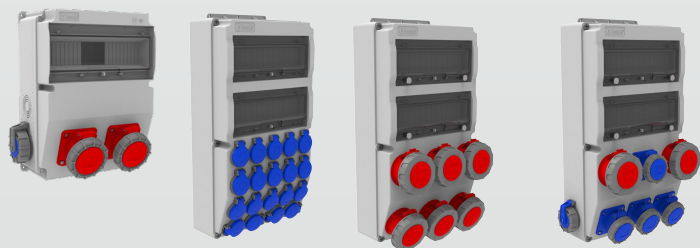
MULTI-PIN MACHINE SOCKET

METAL 16PIN

4030305



INDUSTRIAL SOCKET PANELS



CABLE REELS





ELECTRONZ+

BUZZER & LIGHT



MS 229

MS 357

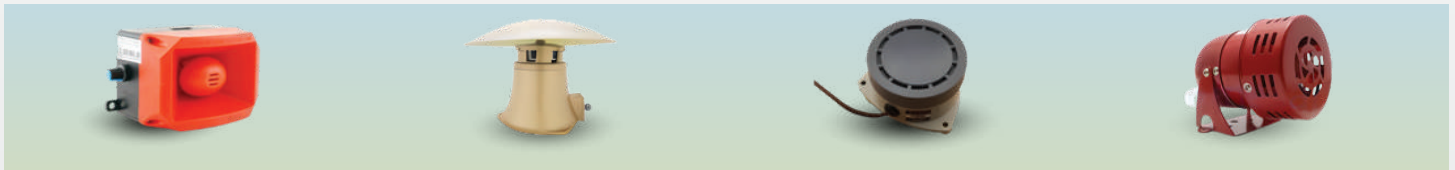
MS 232

MS 5847

MS 350

MS 745

BUZZER / SIREN



MS 200

MS 690

TBN

MS 190

EXPROOF BEASON



TRAFFIC LIGHTS



FORKLIFT LIGHTS



OBSTRUCTION LIGHT



MS 743

MS 628

MS 1326

MS 1350

OBSTRUCTION LIGHT



AOL-6188

MS 627

MS 1292

MS 6200 (BUZZER)

MS 8200.1

MS 8200.2

MS 8200.3

MS 8200.5

MS 8200.4
MS 9200.24VAC/DC (SUPPLY VOLTAGE)
MS 9200.230VAC

MS 12

Cap
MS 19

Tube Wall Mount
MS 14

Wall Mount
MS 15

BEACONS, BUZZERS & OBSTRUCTION LIGHTS



ELECTRONZ+

sales@electronqatar.com ✉

www.electronqatar.com 🌐

Whatsapp Hotline: 3994-2201 📞

PLASTIC BOXES



70 mm

90 mm

85x85x50

95x95x50

95x95x60

110x110x70



110x110x100

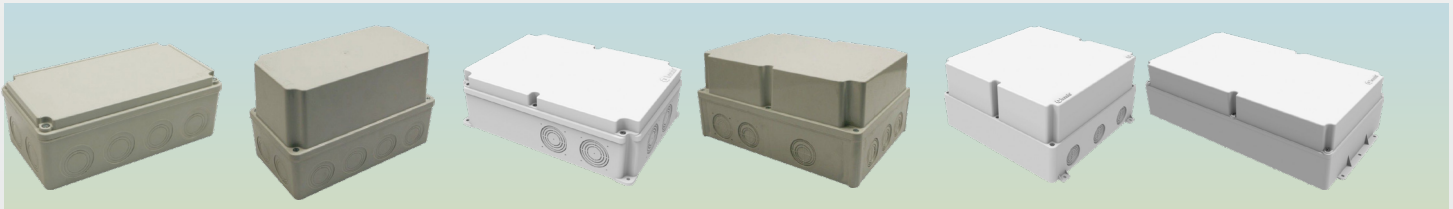
120x120x70

120x120x140

110x150x70

120x170x70

120x170x140



120x255x80

120x255x140

210x300x90

220x300x140

340x340x160

300x535x150

ENCLOSURES & BOXES

PLASTIC ENCLOSURES

- 200x300x130 mm
- 500x600x220 mm
- 250x350x150 mm
- 300x400x170 mm
- 300x400x220 mm
- 350x500x190 mm
- 400x500x180 mm
- 400x500x240 mm
- 400x600x200 mm
- 500x700x250 mm
- 600x800x260 mm



METAL ENCLOSURES

| CODE | WIDTH | HEIGHT | DEPTH |
|--------------|-------|--------|-------|
| EP-20-20-15 | 200 | 200 | 150 |
| EP-40-30-20 | 400 | 300 | 200 |
| EP-50-40-20 | 500 | 400 | 200 |
| EP-60-40-20 | 600 | 400 | 200 |
| EP-60-50-20 | 600 | 500 | 200 |
| EP-70-50-20 | 700 | 500 | 200 |
| EP-80-60-20 | 800 | 600 | 200 |
| EP-100-60-30 | 1000 | 600 | 300 |
| EP-100-80-30 | 1000 | 800 | 300 |



**PANEL BOARD THREE PHASE
FLUSH TYPE 125A**

| WAYS | POLES | HEIGHT | WIDTH | DEPTH |
|------|-------|--------|-------|-------|
| 4 | 12P | 440 | 400 | 120 |
| 6 | 18P | 545 | 400 | 120 |
| 8 | 24P | 545 | 400 | 120 |
| 10 | 30P | 660 | 400 | 120 |
| 12 | 36P | 660 | 400 | 120 |
| 16 | 42P | 710 | 400 | 120 |



obsta

RELIABILITY IN OBSTRUCTION LIGHTING

Approved



References:



اللجنة العليا
للمشاريع والبرث
Supreme Committee
for Delivery & Legacy



INTERNATIONAL CIVIL AVIATION ORGANIZATION
A United Nations Specialized Agency



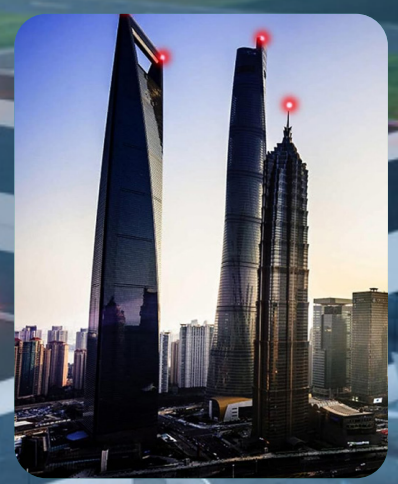
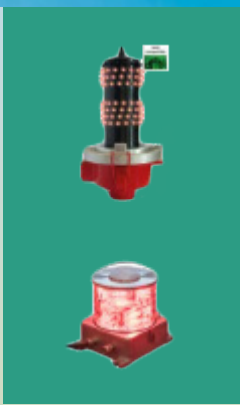
الهيئة العامة للطيران المدني
CIVIL AVIATION AUTHORITY
قطر QATAR



1 **OBSTAFASH DUAL COLOR**
White at Day / Red at Night
Medium Intensity White & Red



2 **ONLY AT NIGHT**
Navilite-IR-FAA-120-240V
OBSTAFASH compact OFC





ELECTRONZ+

sales@electronqatar.com ✉

www.electronqatar.com 🌐

Whatsapp Hotline: 3994-2201 📞

INDOOR LIGHTING, OUTDOOR LIGHTING & POWER SUPPLY

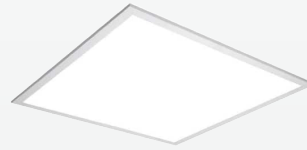
INDOOR LIGHTING



Tri-proof LED light



LED Strip Light - Indoor Mood LV
5W/8W/14.5W



Regular LED Panel Light series
36W-60W



LED Strip Light - Outdoor Mood HV
6.5W/7W/11W



LED Downlight



LED Downlight
18W-80W



COB LED Strip - Linear Series
10W



Classic Low-Voltage LED Bulb Series
2W-18W



LED Spot Light - GU5.3
4W-8W



LED Filament Bulb ST64
4W-8W



LED Filament Bulb A60
4W-12W

CAPACITORS



OUTDOOR LIGHTING



LED Wall Light



LED Floor Light



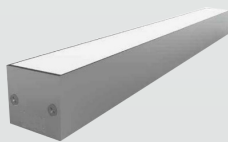
LED Bollard Light



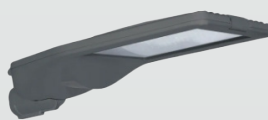
LED Flush



5 Degree LED Projector



LED Outdoor Linear Light



LED Street Light



Solar Flood



Park and Garden Luminares

POWER SUPPLY



Switch Power Supply Driver Adapter Led Strip



Waterproof Power Supply



Slim LED Trafo



LED Driver Power Supply



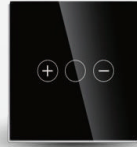
SMART HOME AUTOMATION



Curtain Touch Switch WIFI+BLE



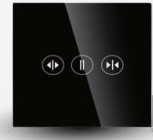
Smart Switch



Normal Dimmer Touch Switch



Doorbell Touch Switch



Normal Curtain Touch Switch



Double Wi-Fi 13A British Socket



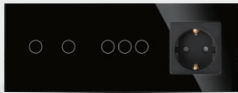
Double Wi-Fi 17A EU Socket



Wi-Fi 13A British Socket



Wi-Fi Smart Wall Light Switch



13A UK Socket+13A UK Socket+3 Gang+3.1A USB



2G Switch+3G Switch+British 16A



3 Gang / 1 Way / 2 Way



PIR Switch



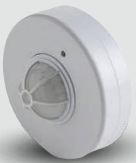
20A/45A



Stereo+HDMI



Rotary Light Dimmer Fan Speed Dimmer



Motion Sensor



1280mA Power Supply



LK/S4.2 Line Coupler, MDRC



Power Supply, 320mA, MRDC



Blind Actuator REG-K/8x/10 with manual mode



KNX Terminal



Fold Switching Dimming Actuator



Fold Universal Actuator

HOME AUTOMATION



ELECTRONZ+

sales@electronqatar.com ✉

www.electronqatar.com 🌐

Whatsapp Hotline: 3994-2201 📞



FIRE ALARM SYSTEMS



ELECTRONZ+

sales@electronqatar.com ✉

www.electronqatar.com 🌐

Whatsapp Hotline: 3994-2201 📞



ATS Controller



Battery Charger



Automatic Voltage Regulator AVR



Oil Pressure Switches



Changeover Relay



Generator Controller

GENERATOR PARTS

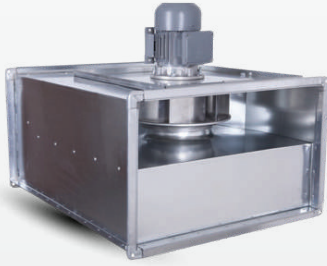


ELECTRONZ+

sales@electronqatar.com ✉

www.electronqatar.com 🌐

Whatsapp Hotline: 3994-2201 📞



Rectangular Duct
Type External Motorized
Radial Fans



Radial Roof Fan
Aspirator



Roof Fans



Simple Deluxe
Exhaust Fan



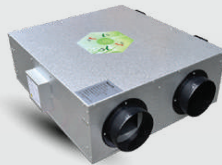
Mixed-flow Duct Fan



Industrial Single
Phase Fan



Industrial Axial Fan



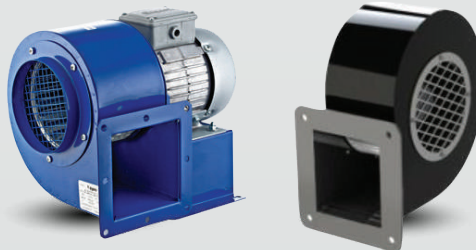
Heat Recovery
Ventilation Device



Purification Box



Axial Exhaust Fan Plastic



Low Pressure Volute Aspirator Fans

FANS & VENTILATORS



ELECTRONZ+

sales@electronqatar.com ✉

www.electronqatar.com 🌐

Whatsapp Hotline: 3994-2201 📞

UPS, REGULATORS & BATTERY CHARGER

VOLTAGE REGULATORS (VOLTAGE STABLIZERS)



Full Automatic Servo Voltage Stabilizers



Full Automatic Single Phase Servo Voltage Stabilizers



Static Voltage Stabilizers



Full Automatic Three Phase Servo Voltage Stabilizers



UPS



Battery Charger

20A to 100A

12VDC

24VDC

48VDC

110VDC

SOLAR PRODUCT



Solar on Grid Inverter



Solar Panel



Solar Of Grid PCU

DISTRIBUTION TRANSFORMERS



Solar Armature



Street Armature



ELECTRONZ+



sales@electronqatar.com ✉

www.electronqatar.com 🌐

Whatsapp Hotline: 3994-2201 📞



Ex- Rigid Conduit & Barrier Gland



EX Non-Armored Brass Cable Gland



Ex-Polyamid Cable Glands



Ex ATEX Explosion Proof (instalation switch)



Exproof Led String Zone 1 Luminaire



Exproof LED Projectors



Ex ATEX Explosion Proof (signal LED tower)



Ex ATEX Explosion Proof (Emergency light fitting)



Ex- Telephone and Speakers



Ex ATEX Explosion Proof (Bulkhead light fitting)



Ex ATEX Explosion Proof (Pendant light fitting)



Ex ATEX Explosion Proof (Linear LED light fitting)



Ex-Aluminum Casting products



Ex - Junction Boxes



Ex-Proof Control Units



Ex-Proof Switches

EXPLOSION-PROOF PRODUCTS



ELECTRONZ+
TRADING

OUR BRANDS

HIGH QUALITY AND BEST PRICES


APATOR

Onka[®]


EKA
transformer

DEKO


OSKAR[®]

Star Trans

 **MAVI**


MW
MEAN WELL

 **Tense**[®]

 **Mesan**[®] SINCE 1974
THE FIRST NAME IN SIGNAL

DURMAZ

VTEKE[®]

KANALSAN

C O N T A C T N O W

 Whatsapp Hotline:3994-2201

 sales@electronqatar.com  www.electronqatar.com